



# EXCAVATOR HYDRAULIC COMPONENTS



TEL:020 89853372  
<http://yuexiangparts.com>

ecer: [www.excavatorhydraulic-parts.com](http://www.excavatorhydraulic-parts.com)  
[www.hydraulic-excavatorparts.com](http://www.hydraulic-excavatorparts.com)

Alibabaweb: <https://yuexiangparts.en.alibaba.com>  
<https://belparts.en.alibaba.com>  
<https://belparts02.en.alibaba.com>



*Do better for  
tomorrow*



# About us

## About us



Guangzhou Belparts Engineering Machinery Limited founded in 2013, We are specialized in manufacturing, selling, procuring, storing, transpoting and serving. Our main products are Excavator Hydraulic spare parts, Hydraulic main pump, Swing Motor, Travel Motor, Final Drive Ass'y, Swing Ass'y, Swing Gearbox, Travel Gearbox, and other hydraulic items with genuine and aftermarket quality.

**FOCUS ON**  
**HYDRAULIC FIELD**



HYDRAULIC PUMP TEST



FINAL DRIVE TEST



HEAT TREATMENT WORKSHOP



AUTOMATIC ASSEMBLY



TRAVEL MOTOR PRODUCTION



FINAL DRIVE TEST



Because of reliable quality and our devoted service, we obtain continuous orders from our worldwide clients. 'Clients' benefit and service first' is our slogan. We warmly welcome your visit and hope to build up business relationship with you on mutual benefits from now or in the near future.



**SHIPMENT**

**RESERVE**



Belparts sells products with different quality and after-sales quality. All the most famous brands (Komatsu, Hitachi, Volvo, Hyundai Doosan, Kobelco, caterpillar, Kato, Sumitomo, JCB, Sany, XCMG, Longjing, etc.) have about 95% of their continuous inventory. Belparts parts is committed to customer satisfaction and best machine performance. Our products enjoy a high reputation all over the world and have been exported to more than 200 countries!



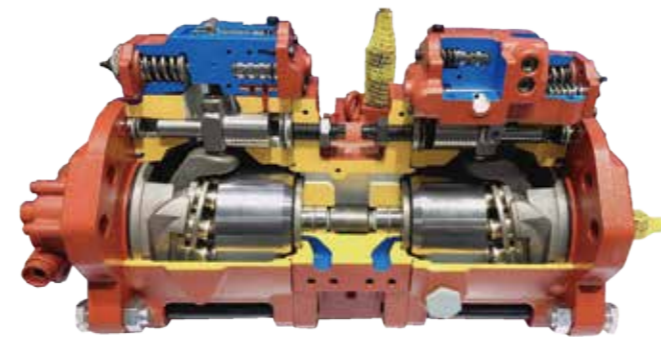
## PRODUCT CATALOGUE

Hydraulic Pump	1-10	Fan Motor	83-86
Final Drive	11-18	Regulator	87-90
Travel Gearbox	19-26	Gear Pump	91-94
Swing Gearbox	27-34	Slew Bearing	95-98
Travel Motor	35-40	Cylinder	99-100
Swing Motor	41-44	Floating Seal	101-102
Hydraulic Parts	45-50	Clutch Disc	103-104
Gear Parts	51-56	Coupling	105-106
Computer & Display	57-66		
Solenoid Valve	67-72		
Relief Valve	73-78		
Fan Pump	79-82		



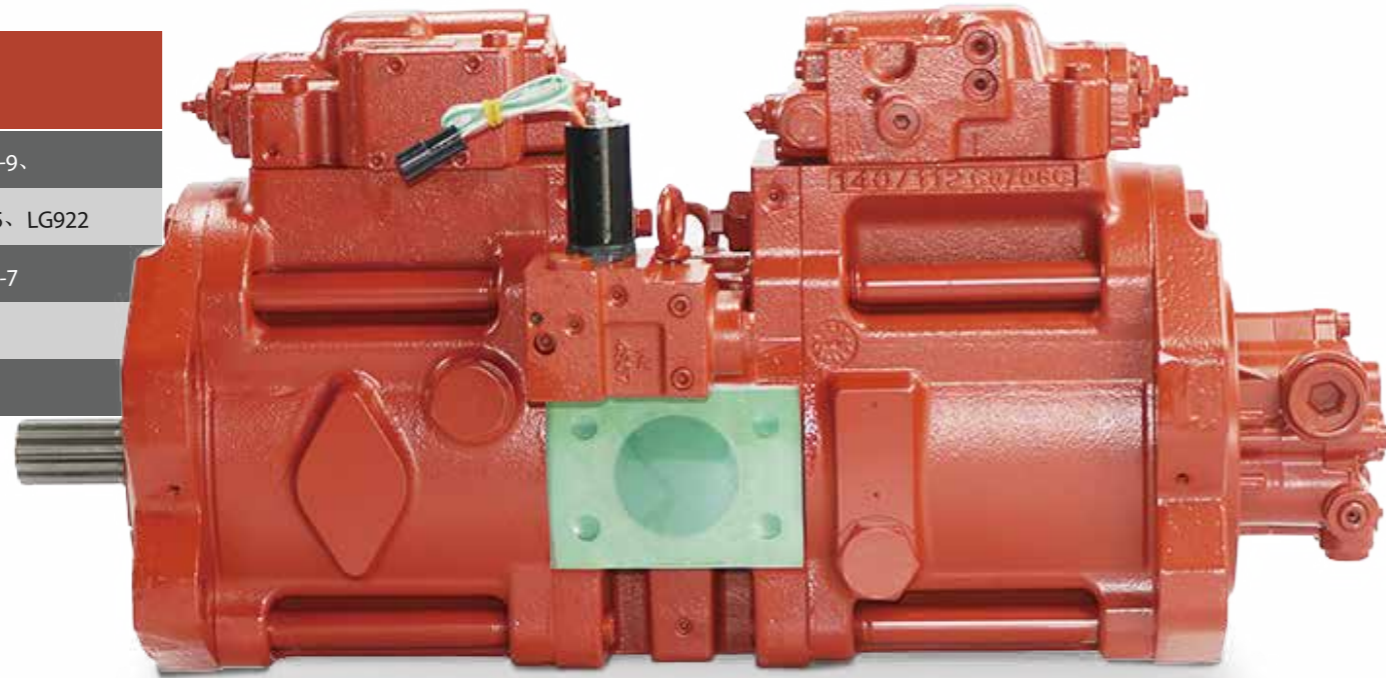
# HYDRAULIC HYDRAULIC PUMP

It has the swashplate axial piston pump and double pump in series. It can adjust the angle of swashplate and realize independent control of single pump. With strong self-priming competence, long-life, low noise and other characteristics, it is suitable for crawler hydraulic excavator and various hydraulic open circuit.



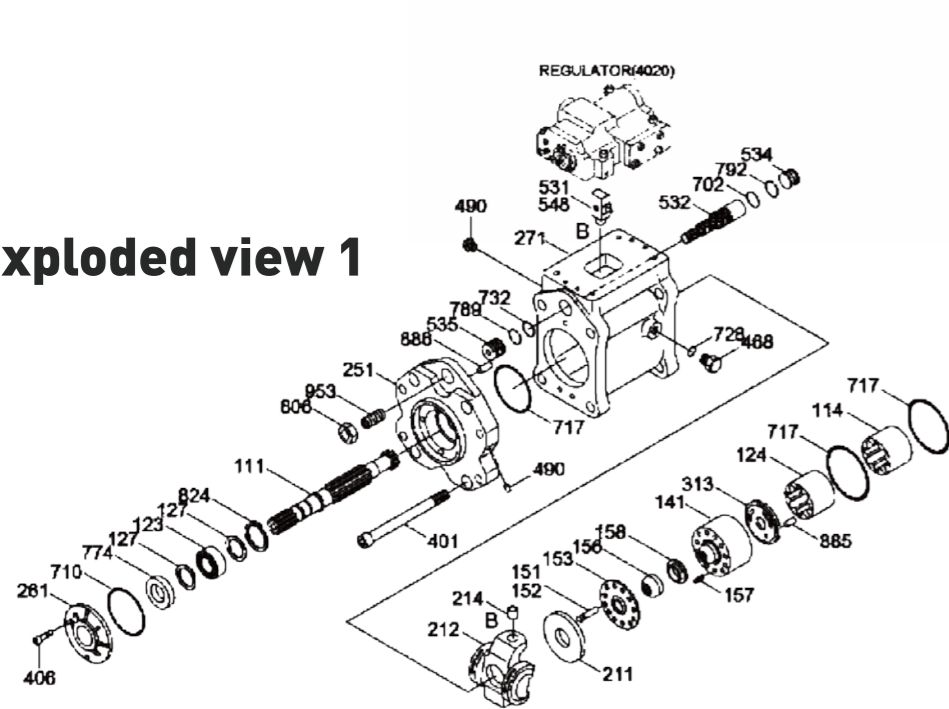
### K3V112-DT

9N24-12T	SH280、HD820、R215-9、
9N24-14T	EC210、EC240、XE215、LG922
9C32-12T	R210-5、R220-5、R225-7
HNOV-12T	SH200A1A2
HNOV-14T	JCM921

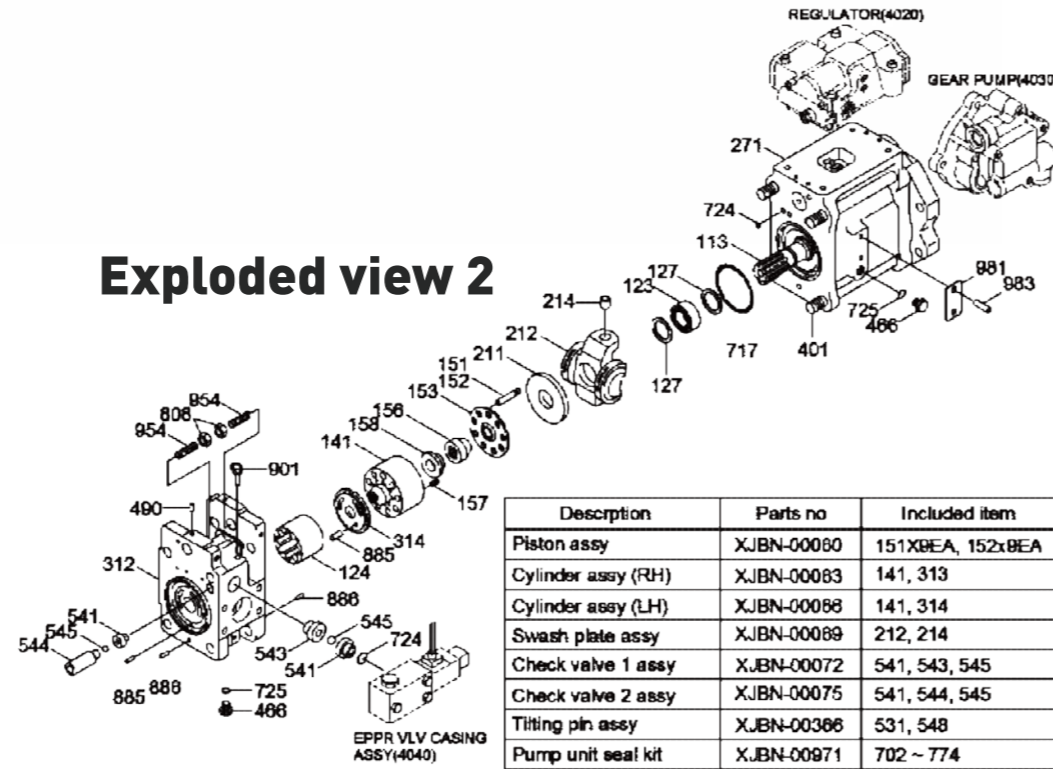


Model	ml/r	Mpa	L/min	r/min	Mpa	N.t	°C	Rotation
K3V112-DT	112	34.3	126*2	2000	39.2	14	-20°C-80°C	right
	3.9	3.9	30					

#### Exploded view 1



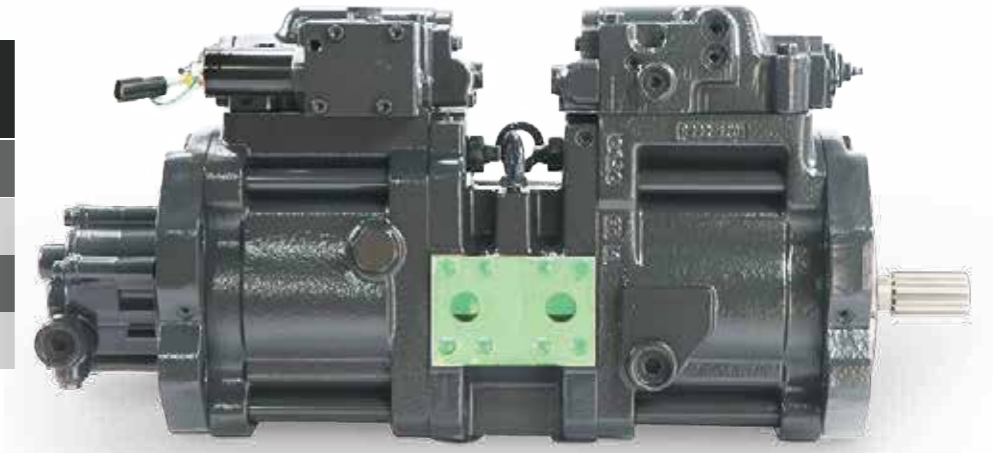
#### Exploded view 2



Description	Parts no	Included item
Piston assy	X.JBN-00080	151XBEA, 152xBEA
Cylinder assy (RH)	X.JBN-00083	141, 313
Cylinder assy (LH)	X.JBN-00088	141, 314
Swash plate assy	X.JBN-00089	212, 214
Check valve 1 assy	X.JBN-00072	541, 543, 545
Check valve 2 assy	X.JBN-00075	541, 544, 545
Tilting pin assy	X.JBN-00366	531, 548
Pump unit seal kit	X.JBN-00971	702 ~ 774

### K3V63DT

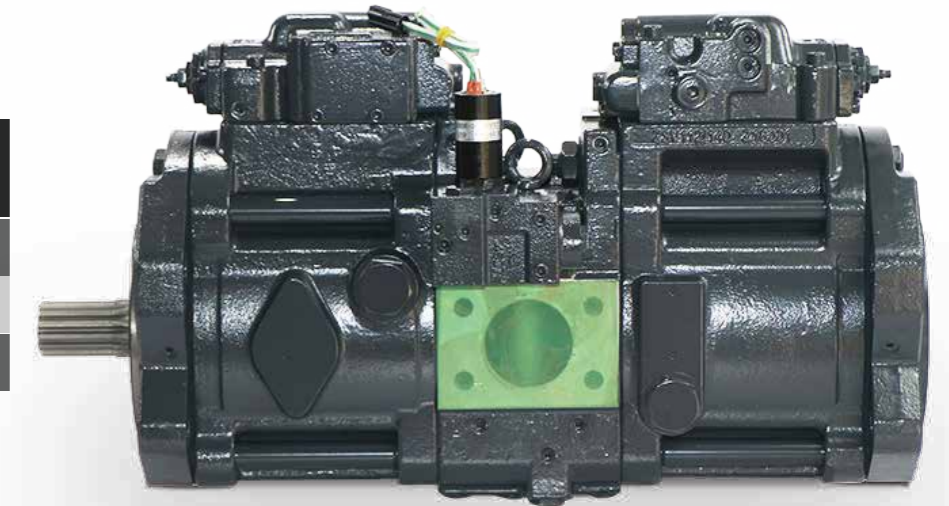
9N09-14T	EC140,LG915,XE150
9C22-14T	R130-5,R140-7,R150-7
HNOV-14T	DH150-7,XE135
9POH-14T	SY135-8



Model	ml/r	Mpa	L/min	r/min	Mpa	N.t	°C	Rotation
K3V63DT	63*2	34.3	126*2	2000	39.2	14	-20°C-80°C	right
	15	3.9	30					

### K3V112-DTP

9N24-12T	R225-9,DX225
9P12-12T	R225-9,R265-9,R275-9
9C32-14T	JCB220



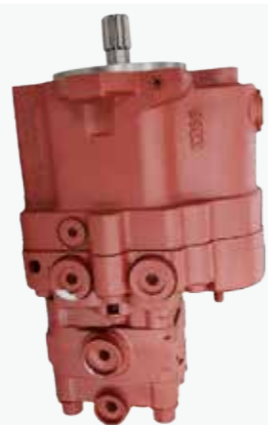
Model	ml/r	Mpa	L/min	r/min	Mpa	N.t	°C	Rotation
K3V112-DTP	112*2	34.3	224*2	2000	39.2	12	-20°C-80°C	right
	15	3.9	30			14		



PVD-00B-16P E304 208-1149



PVD-1B-32P-11G5-5677A



PVD-15B-32P-9AG5



A10V43SR-1RS5-D



A8V0200 400914-00248



AP2D21-18234



K3V112DTP-9N14(PTO)



K5V160DTP-9Y04-13T



K3V112DTP-9TDL-14T



K3V63DT-HNOE



K5V80DT-9N-12T



A10V063



K3V180DT-9N29



K3V63DT-9POH



K3V140DT-9T1L



K3V112DTP-1E42



PC200-8 208-2L-00400



K5V200DTH-9N0B



SBS120- E320C E320D



SBS140 272-6959-E325D



SBS80 176-3963 E315C



K5V140DTP-17T



K3V112DTP-9P12-12T



K7V63DTP-9N0E



K5V140DTP-9N01-17T



K3V112S-1NCJ-12



K5V80DT-9C



K3V180DT-9C69-17T



K3V140DT-HNOV



K3V63DT-9N09



PC340NLC-7K 708-2G-00023



HPV116C EX200-1



HPV091DS EX100-2 EX120-2




HPV102 HPV0102GW -ZX200





HPV118 HPV0118 - ZX200-3




HPV145HW=5-ZX330-3


PUMP MODEL	EXCAVATOR MODEL	BRAND
A10V43	SH75 SH60-1/2/3 SH75U-2 LS1600 HD250V-2(OLD) PC75-2	
A10V40	S80W-3	
A10V17	PC25 PC30 IHI35 IHI30 PC30-7 PC40	
A10V28	SK55 PC45-7 SH35 PC35	
A10VSO28	ZX70	
A10VO71	HD250V-2 E70 ZX70 SY5 DH70 SY65	
A8V107	HD880-2 HD900-2/5 S220-5 HD770-1 LS2800/3400	
A8V115	HD900-2/7 LS4300 S170-3/5	
A8V172	SH300/350-2/3 LS5800/SH400-2 LS4300	
A8V55	EX100 HD500 HD450-3/5/7 HD512 EX120 UH063 EX04-7	
A8V59	EX165 S04LC IHI120 EX150-5	
A8V80	HD750G HD700G HD650SE HD770-1	
A8V86	HD550SE S130W HD400-2 HD900SEV HD450-2	
A8VO107	E225 E320BU E300B/E300L E325L/BL E215.E322L E329L	
A8VO140	DH300-7 R370 DH370-7 DH360-7	
A8VO160	E345 E330BL E330B E330L E330	
A8VO200	E330C DH460 DH500-7	
A7VO250	EX400-1 EX400-3 EX600-5	
AP2D14	E303	
AP2D21	EX35 S50W-3 IHI35 PC45/PC35 PC50	
AP2D25	DH55 SH55 SH65 R60-5 R60-7 DH60-7 R55-7 ZX60-7 EC55 CX55	
AP2D36/AP2D38/AP2D42	E305.5 E308 DH70 SK60-2/3/5 EX75-3 EX60-5 E307 E70B ZX70 R80-3/7 DH80	
A10VSO63	YC60-7	
A8VO80	R190-5	


PUMP MODEL	EXCAVATOR MODEL	BRAND
HPV116	EX200-1 EX220-1 EX220LC	
HPV0102	EX200-5 EX220-5 EX230-5 EX230LC-5 EX210LC-5	
HPV0105	EX210-6 ZX200 ZX230	
HPV118	ZX250-3 ZXS240-3 (EI) ZX230-3(EI) ZX270 ZX250-3	
HPV145	EX300-2 EX300-3	
HPV050	EX100-5 EX120-5 EX135	
HPK055K	ZX110 ZX120 ZX130	
HPV091DS	EX120-2/EX100-2	
HPV091ES	EX120-3/EX100-3	
HPV091DW	EX200-2/EX220-2	
HPV091EW	EX200-3 EX220-3	
HPV125A	UH09-7 UH10-1/2/3	
HPV125B	H07-7 UH16 UH083	

PUMP MODEL	EXCAVATOR MODEL	BRAND
PVD-2B-40/36	YC35-6 YC45	
PVD-2B-42	PC55 PC55-2 PC50UU PC50UU-2 EX58U PC56-7 EX40-2 E305 E50	
PVK-2B-505	ZX60 EX55 NT55 ZX50 ZX55 YC55	
PVD-0B-18P-6G3-4191A	PC15	
PVD-1B-32P-11G5-4190	PC30	
PVD-3B-54P-18G5-4185F	ZX60 EX55 NT55 ZX50 ZX55 YC55	
PVD-3B-60L5P-9G-2036C	SK75	
PVD-2B-40	EX270-1 EX270LC EX300-1/EX300-2/EX300-3 ZX330 EX300-5 EX330LC-5 EX350-5 ZX380 ZX360	
PVD-1B-32	EX35 PC30 YC35-6	

PUMP MODEL	EXCAVATOR MODEL	BRAND
K3SP36	SK60-7 YC85 SK75-3 R80-7 SK70	
K3V112DT	SK320 DH220LC-3/5/7 HD700-2/7 DH258 SE240LC-3	
K3V112DTP	SK200-6 SK200-6E SK200-8	
K3V140	R300 R280LC-2 R290LC-3 R330LC-3 E350/450 DH280-2	
K3V180	R3600LC-3 HD1430 EC360 DH330/HD2045 R450-4 R420-3	
K3V280DTH	ZX600 ZX650 ZX670 EC700 ZX850 ZX870	
K3V63DT	DH130/150 E312 R160LC-3 SK100-1/2/3 SK120-1/2/3	
K3V112DT	SK320 DH220LC-3/5/7 HD700-2/7 DH258	
K3V63BDT	SK100-5 SK120-5	
K3V63DTP	SK120-6 SK100-6 SK130-8	
K5V80	SK135 R130 SK135 ZX160 ZX130	
K5V140DT	SH350-3 DH300 SH300-A3 R305LC-7 SK350-8 SY235	
K5V140DTP	SH300/SH300A3 SH350-3 SK350-8 SY235 SK330-8	

PUMP MODEL	EXCAVATOR MODEL	BRAND
SBS80	E311 E312C E170 E311D E312D E314	
SBS120	E320C E320D	
SBS140	E325C E325D E324	

PUMP MODEL	EXCAVATOR MODEL	BRAND
PSVD2-16	SWE18 VIO35 VIO40	
PSVD2-17	SWE40 SWE45 SWE50 FR40 FR50 XE40	
PSVD2-19	SWE60 SWE55 FR60 XE60 VIO55	
PSVD-21	SWE60 SWE50 YC35-6 EX40 E40 YC45	
PSVD-25	SWE80 SWE70N9 VIO75	
PSVD-27/PSVD-26	XCMG60 XCMG70 SWE80N9 LIUGONG906 IHI60 E304 SWE70	
PSV2-19	SK40	
PSVL-54	U50 U65 U55 E305CL	

PUMP MODEL	EXCAVATOR MODEL	BRAND
HPV160	PC300-3/PC300-5 PC360LC-5 PC400-3/PC400-5 PC410-3	
HPV35	PC60-3 PC60-5	
HPV75	PC75UU PC60-6 PC60-7	
HPV55	PC100-3/5 PC120-3/5	
HPV70	PC150-3 PC150-5	
HPV90	PC200-3/5 PC220-3 PC220-3/5	
HPV95	PC120-6 PC100-6 PC200-7/220-7 PC200/220-6 PC128 PC130-7 PC240-8 PC190-6/7	
HPV132	PC300-6 PC350-6 PC400-6 PC450-6	
HPV140	PC300-7 PC350-7 PC360-7 PC120-7 PC270-7	
HPV165	PC400-7 PC450-7 PC400-8	

**We have more models**

# FINAL DRIVE

Swashplate axial piston motor and two-stage planetary reducer assembly, the motor installed one-way valve, balance valve, safety relief valve, variable speed valve and parking brake, with high and low speed conversion function, double displacement, low-noise, long-life, safe and reliable characteristics. It is suitable for various types of hydraulic crawler driving device.



# TM40

18-25t excavator

## Frame

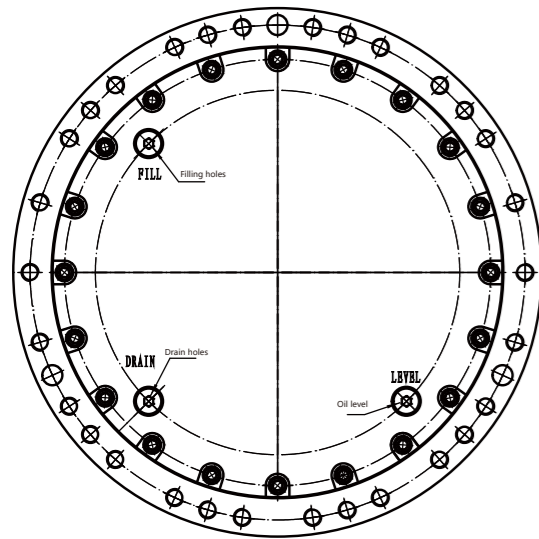
Nr of holes: 30 Screw type: 16

## Drive teeth

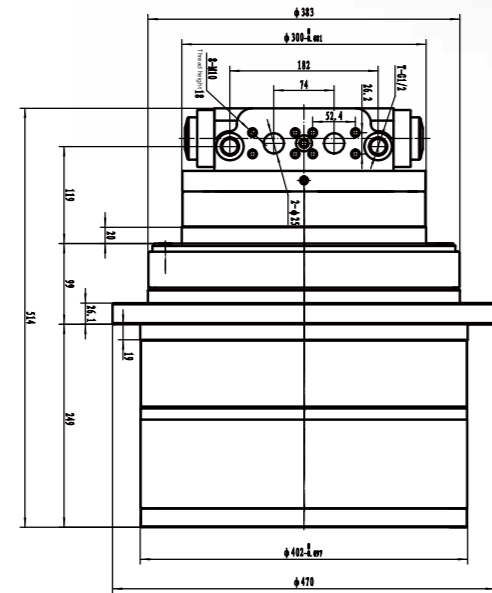
Nr of holes: 22+8 Screw type: 16

## For

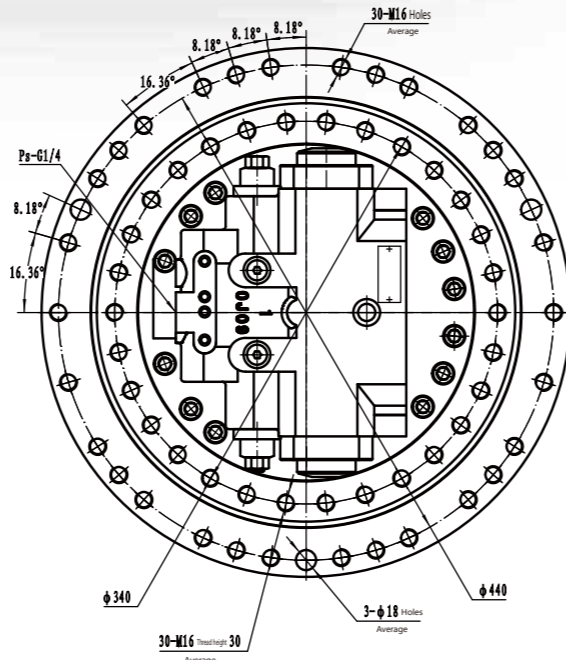
R215-7,R210LC-7,R250LC-7,R225-7,DH200-5,DH200-7,DH220-5,DH220-7,DH25,HD800-7,HD700-7,JCB220,SH200-1,SH200-2,SH200-A3,EC210B,EC240,SY215,SY235,LG200,LG220,LG240,LG920,LG922,LG925D,XCM210



BOTTOM



FRONT VIEW



TOP

# TM07

5.5-6.5T excavator

## Frame

Nr of holes: 12 Screw type: 14

## Drive teeth

Nr of holes: 12 Screw type: 14

## For

R55/60,DH55/60,DX60,XE60,SK60C,SY65,R60-7,R70-7,DH60-7,DX60W,DH55,SY65C-9,EC55,EC60,LG660,LG665



# TM09

6-8.5T excavator

## Frame

Nr of holes: 12 Screw type: 16

## Drive teeth

Nr of holes: 12 Screw type: 14

## For

PC60-5/6/7/8,PC80-5/6/7/8,HD250,HD307,HD308,E308,E307,DH80,DX75,SH60,SH75,SK60-3/5/6,SY95C-9,SY75



# PC78

6-8.5T excavator

## Frame

Nr of holes: 14 Screw type: 16

## Drive teeth

Nr of holes: 14 Screw type: 14

## For

PC78US-6



# TM18

10-13T excavator

## Frame

Nr of holes: 20 Screw type: 16

## Drive teeth

Nr of holes: 15 Screw type: 16

## For

PC100/110/120/130,SK100/120/135/140,SH100/120/135,SY135,DH150,YC135,LG915,JCM913,HD400





**TM100**  
(26Holes\*36Holes)  
**For**  
DH520 DX520 DH500



**SY335**  
(18Holes\*24Holes)  
**For**  
SY335



**ZX240-3**  
(16Holes\*20Holes)  
**For**  
ZX240-3 ZX240-5,ZX250-3,  
ZX250-5,ZX260-3,ZX260-5



**TM01**  
1-1.8T excavator  
**For**  
PHV-1B Kubota U15-3,KX 41.2,  
KX 41.2V,KX 36.3,K008,PC14R2,  
PC15R8, PC07,CX18,E18C,ZX18  
IHI Imer 10F2



**TM02**  
2-2.8T excavator  
**For**  
PHV2B,KYB MAG18VP-220,  
EC20,CX27B,CX22B,X225,B172,  
B19, B18EX, VIO25, VIO30,VIO20.2,  
B15YB121.2B, KX61-3,CX27,20NX,10F2,  
15JU20, U25,U25.3,U25.3 alfa,  
EB 150,TB15,PC20



**TM03**  
2.8t-3.5t excavator  
**For**  
KYB MAG18VP-230/MAG18VP-350,  
Yanmar( B22, B25V,B37V,B27VIO30),  
Kubota [KX71-2,KX71-3,KX61-2,KX71,  
KX61U25-3(VerB),KX91.3],  
(EX35,ZX30CLR,FH35.2,EX30.2,EH22.2),  
IHI Imer(28N,25VX,25NX,30NX),  
Bobcat 325, EC25, JCB 802.7, PC30 E305.5,  
ZX30,VIO30,35JH135



**ZX230**  
(16Holes\*16Holes)  
**For**  
ZX230 ZX240



**ZX200-3**  
(16Holes\*18Holes)  
**For**  
ZX200-3



**MAG-85VP-2400**  
(16Holes\*22Holes)  
**For**  
E150,EC140(KYB),E150,EX135(KYB)



**TM04**  
3-4T excavator  
**For**  
PHV-390-53B, EX40,IHI40JX



**TM04A**  
3-4T excavator  
**For**  
MAG26VPB37, Bobcat,331D,  
328DCC Caterpillar,E303.5,  
Neuson 2902RD,IHI Imer 35J,TB035,  
PC40-6,PC30,PC35,EB 406 PC40-7



**TM04I**  
3-4T excavator  
**For**  
SK40,Bobcat 331D 425  
Kubota KX101,U30,KX91.2  
IHI Imer 25J Volvo EC30 CX36 YC35



**TM22VC**  
(20Holes\*15 Holes)  
**For**  
PC135,PC150,DH135,  
DH150,SK130,SK140-8,EC140,SY155C-9,XE150D,  
SWE150LC, YC135,YC160-8  
FR170,LG150



**GM35(PC Type)**  
(18Holes\*20Holes)  
**For**  
PC200-3 PC200-5 PC200-6 PC200-7  
PC200-8



**GM35(SK Type)**  
(17Holes\*22Holes)  
**For**  
SK200-3,SK200-5,SK200-6,  
SK200-7



**TM06**  
5-6T excavator  
**For**  
GM06VA,PHV-4B-60B,PC50,PC55,  
PC56,PC56-7,PC57-7,PC58UJ-3,  
SY55C-9,SK60-8,CX55,TB50,ZX60,  
YUCHAI60Y,C60,E305



**TM06F**  
5-6T excavator  
**For**  
(MAG-33VP-650)  
SWE50 SWE60 SWE70  
ZX55 ZX48 ZX68 ZX48U-5A  
VIO50



**TM07**  
5.5-6.5T excavator  
**For**  
JMV41,TM07VC-A-19,GM07VCR55,R60,  
R60-7R70-7DH60-7, DX60W, DH55,  
DH70,DH80,SY65C-9, SY60C-9,SY65,  
SK60-C,SK60,SK60C,XE60,XN60-9,XN60-4L,  
LG660, LG665,EC55,EC60,JH70,R55,R60,R60,  
JCB8056, XCM60,LG906



**MAG170**  
(30Holes\*30Holes)  
**For**  
SH200A3 SH200-A5,SH210-A5,  
SH240-A3 SH240-A5,CX210,CX240,  
SK250-8,SK260-8,SK270-8,  
HD820-2,HD820-3,HD820-5



**DNB50**  
(20Holes\*24Holes)  
**For**  
DH300-5//DX300-7,EC290L,G300,R300-5



**SK230-6**  
(20Holes\*26Holes)  
**For**  
SK230-6,SK250-6,DH258-5,  
DH258-7DX260LC



**TM09**  
6-8.5T excavator  
**For**  
TM10VD-A-26/49-17TM,8TM53310147,  
JMV-47/27-01-VBC-RJ-53,GM10VL,GM09VN,  
KYB:MAG-44VP-800,PC60-5, PC60-6,  
PC60-8, PC80-5,PC80-6,PC80-7,PC80-8,  
HD250,HD307,HD308,E70,E70B, E308- E307,  
DH80 DX75,R80-7,SY95C-9,SY75,SY75C-9,  
LG685, LG690E,SH60,SH75,SH160,SK60-3,  
SK60-6, SK70 SK75;



**T7T2**  
(12Holes\*12Holes)  
**For**  
E306E,SEW50,GFT772



**T9T2**  
(12Holes\*16Holes)  
**For**  
TM09VC GFT9T2 SEW80  
SEW90, LG85



**TM70VC**  
(26Holes\*24Holes)  
**For**  
DX340,R375,R375-7R385-9,EC350,  
EC360,EC380,DX345,DX350



**TM06H**  
(9Holes\*9Holes)  
**For**  
PC45,PC50, PC50UU-2,SK45SR,SK50,  
E305.5, E306,EC45,DH55



**DNB50**  
(18Holes\*26Holes)  
**For**  
SH350-3/5,CX360,SK350-8,  
SH350A5



**TM18**  
10-13T excavator  
**For**  
PC100-1, PC100-2,PC100-3,PC100-5,  
PC120-1,PC120-2,PC120-3,PC120-5,  
PC120-7,PC128,PC138,PC110-7,PC130-7,  
PC130-6,PC130-5, PC128UU, PC90,  
PC128, HD510,HD512,HD512R,HD400,  
HD513, SH100-1,SH100-2,SH100-A3,  
SH120-2,SH120-A3, ,DX140



**TM22**  
13-15T excavator  
**For**  
R150-9 R140-9 R130VS R150VS DH150-9  
R140LC-9S



**TM60**  
(18Holes\*26Holes)  
**For**  
R305,R335,R290-7 R300LC-9S

Motor model	EXCAVATOR MODEL	Number of holes	weight	tonnage
TM01	PHV-1B,SK1.5,Kubota,U15-3,KX,41.2,KX,41.2V,KX,36.3,PC14R2,PC15R8,PC07CX18,E18C,ZX18,10F2	8*9Holes	16kg	1t-1.8t
TM02	PHV2B,MAG18VP-220,EC20,CX27B,CX22B,X225,U20,U25,TB15,PC20	8*9Holes	25kg	2t-2.8t
TM03	Yanmar (B22,B25V,B37V,B27,VI030),Kubota [KX71-2,KX71-3,KX91.3],Hitachi (EX35,ZX30CLR,FH35,2,EX30,2,EH22,2)	9*12Holes	44kg	2.8t-3.5t
TM04	PHV-390-53B,EX40,IHI40JX	12*12Holes	52kg	3t-4t
TM04A	KYB,MAG26VP,Yanmar,B37,Bobcat,331D,328DCC,Caterpillar,2902RD,IHI,Imer,35J,TB035,PC40-6,PC30,PC35	9*9Holes	52kg	3t-4t
TM04I	SK40,Bobcat,331D,425,Kubota,KX101,U30,KX91.2,IHI,Imer,25J,EC30,CX36,YC35	9*9/12*12Holes	52kg	3t-4t
TM06	GM06VA,PHV-4B-60B,PC50,PC55,PC56,PC56-7,PC57-7,PC58UU-3,SY55C-9,SK60-8,CX55,TB50,ZX60,YUCHAI60,	9*12Holes	63KG	5t-6t
TM06H	PC45,PC50,PC50UU-2,SK45SR,SK50,E305,5,E306(9*9),DH55,EC45	9*9Holes	64KG	5t-6t
TM06F (MAG33/GM06F)	KYB (MAG-33VP-650),SWE50,SWE60,SWE70,ZX55,ZX48,ZX68,ZX48U-5A,VI050	9*9Holes	64KG	5t-6t
TM07	TM07VC-A-19,GM07VC,R55,R60,R60-7,R70-7,DH55,DH70,DH60,SY65C-9,SY60C-9,SY65,SK60-C,SK60	12*12Holes	88KG	5.5t-6.5t
TM09 <sub>(12*12)</sub>	MAG-44VP-800,PC60-5,PC60-6,PC60-7,PC60-8,PC80-5,PC80-6,PC80-7,HD250,HD307,HD308,E70,E70B,E308,E307,DH80,DX75,R80-7	12*12Holes	91KG	6t-8.5t
TM09 <sub>(14*14)</sub>	PC78,PC75UU-2,PC78US-6,PC78MR,21W-60-22130	14*14 Holes	94KG	6t-8.5t
GFT9T2	TM09VC,GFT9T2,SEW80,SEW90,LG85	12*16Holes	78KG	6t-8.5t
GFT7T2	E306E,SEW50	12*12Holes	64KG	6t-8.5t
TM18	PC100-3,PC100-5,PC100-6,PC120-1,PC120-2,PC120-3,PC120-5,PC120-6,PC120-7,PC128,PC138,PC110-7,PC130-7,PC130-6,PC130-5	20*15Holes	144KG	10t-13t
TM22VC (EC140)	PC135,PC150,DH135,DH150,SK130,SK140-8,EC140,SY155C-9,XE150D,135,150,LG6150E,XG815E,SWE150LC,YC135,YC160-8FR170,LG150	20*15Holes	162KG	11t-13t
TM22 (R150-9)	R150-9,R140-9,R130VS,R150VS,DH150-9,R140LC-9S	20*21Holes	150KG	13t-14t

Motor model	EXCAVATOR MODEL	Number of holes	weight	tonnage
MAG-85VP-2400 (E150)	MAG-85VP-2400,EC140 (KYB),E150,EX135 (KYB)	16*22Holes	150KG	—
MAG85-1800 (TM22C)	E311,E312B,E312C,E312D,E313,SH260,SH265,R110-7,E110B,E120B,SY135,R110-7,SH260,SH265,140,SH135,JS130	15*16Holes	152KG	—
TM35 (SK)	SK200-3,SK200-5,SK200-6,SK200-7,YN15V00007F1	17*22Holes	330KG	—
TM35 (PC)	PC200-3,PC200-5,PC200-6,PC200-7,PC200-8,20Y-27-00560	18*20Holes	315KG	—
TM40	SK260,SK270,EC210B SY215 LG922,DH200-5,DH200-7,DH220-5,R215-7,R210-7,R210LC-7,R250-7,R250LC-7,R225-7,R210-9	30*22+8Holes	310KG	18t-25t
MAG170 (SH200A3)	SH200A3,SH200-A5,SH210-A5,SH240-A3,SH240-A5,CX210,CX240,SK250-8,SK260-8,SK270-8,HD820-2,HD820-3,HD820-5	30*30Holes	350KG	—
DNB50 (DX300)	DH300-5/7,DX300-7,EC290,LG300,R300-5	20*24Holes	400KG	—
DNB50 (SH350A5)	SH350-3/5,CX360,SK350-8	18*26Holes	400KG	—
TM60	R305,R335,R290-7,R300LC-9S	18*26Holes	400KG	—
SK230-6	SK230-6,SK250-6,DH258-5,DH258-7,DX260LC	20*26Holes	310KG	—
TM70VC	DX340,R375,R375-7,R385-9,EC350,EC360,EC380,DX345,DX350	26*24Holes	400KG	—
TM100	TM100,DH520,DX520,DH500	26*36Holes	520KG	—
ZX200 (HMGF36)	ZX200-6,ZX200-1,ZX210	16*16Holes	280KG	—
ZX200-3 (HMGF40FA)	ZX200-3,ZX200-5G,ZX210-3,ZX210-5G	16*18Holes	280KG	—
ZX230	ZX230,ZX240	16*16Holes	295KG	—
ZX240-3 (HMGF44BA)	X240-3,ZX240-5,ZX250-3,ZX250-5,ZX260-3,ZX260-5	16*20Holes	295KG	—

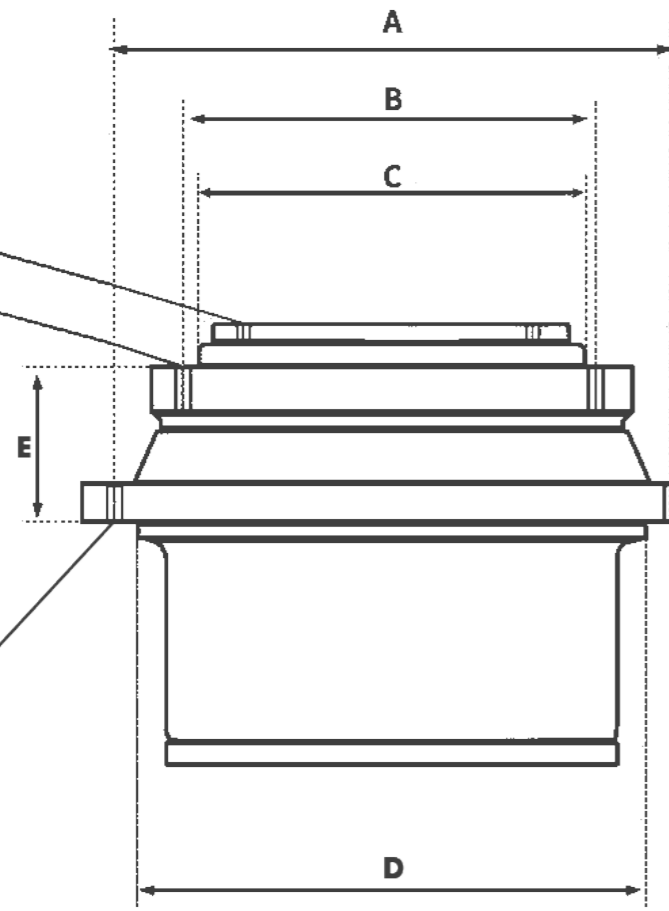
**We have  
more models**

# TRAVEL TRAVEL GEARBOX

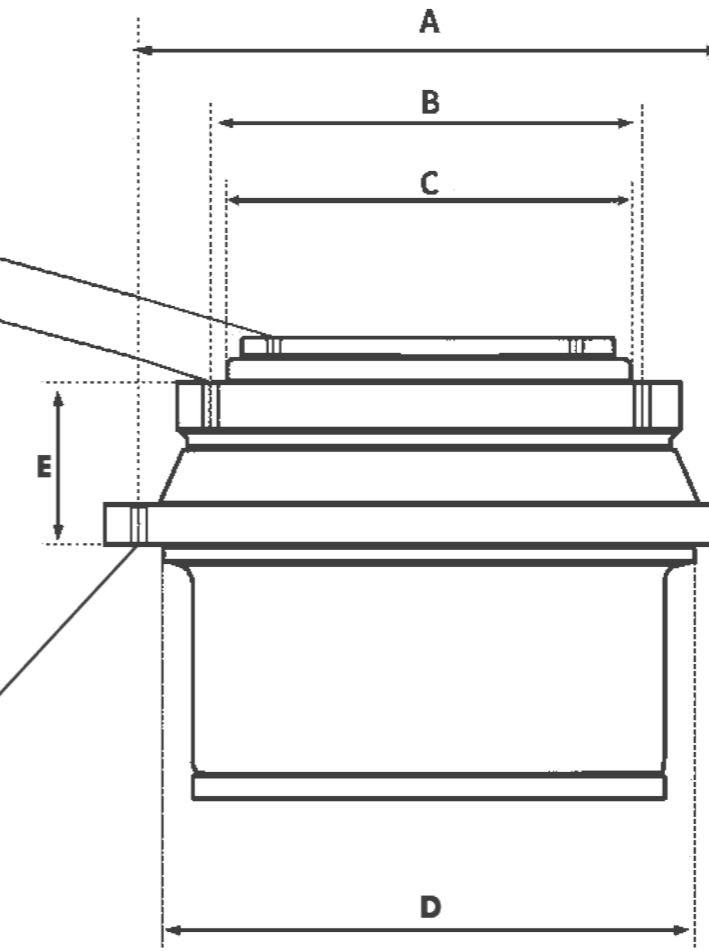
The travel gearbox is divided into two-planetary deceleration or three-planetary deceleration and double-planetary deceleration. It is composed of motor housing, driving housing, gear ring, planetary frame, planetary gear and other components. It has the characteristics of low speed, high-torque and low noise, and can be matched with a variety of hydraulic moving motors.



MACHINE TYPE	
R60-5	
Nr of holes	8
screw type	10
Nr of holes	12
screw type	14
ØA	282.6
ØB	250
ØC	210
ØD	250
ØE	74.3
Nr of holes	12
screw type	14



MACHINE TYPE	
ZAX60	
Nr of holes	8
screw type	10
Nr of holes	12
screw type	14
ØA	262
ØB	220
ØC	180
ØD	230
ØE	78
Nr of holes	12
screw type	14



**R80-7**

Number of frame hole	12-M16
Number of sprocket hole	12-M16
Motor connecting hole	8-M12
Application	R80-7



**R110-7**

Number of frame hole	16-M16
Number of sprocket hole	18-M16
Motor connecting hole	8-M14
Application	R110-7



**R150-9**

Number of frame hole	20-M16
Number of sprocket hole	21-M16
Motor connecting hole	10-M12
Application	R150-9



**ZAX120**

Number of frame hole	14-M16
Number of sprocket hole	16-M16
Motor connecting hole	8-M14
Application	ZAX120



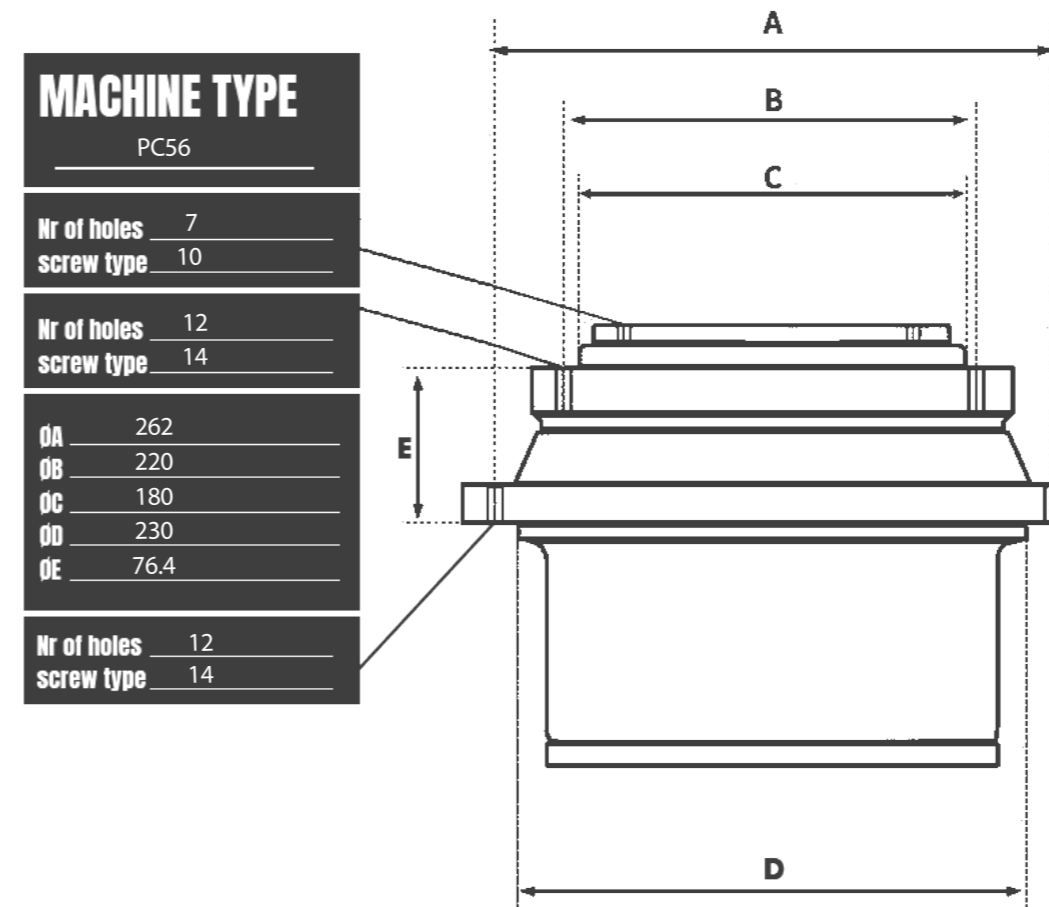
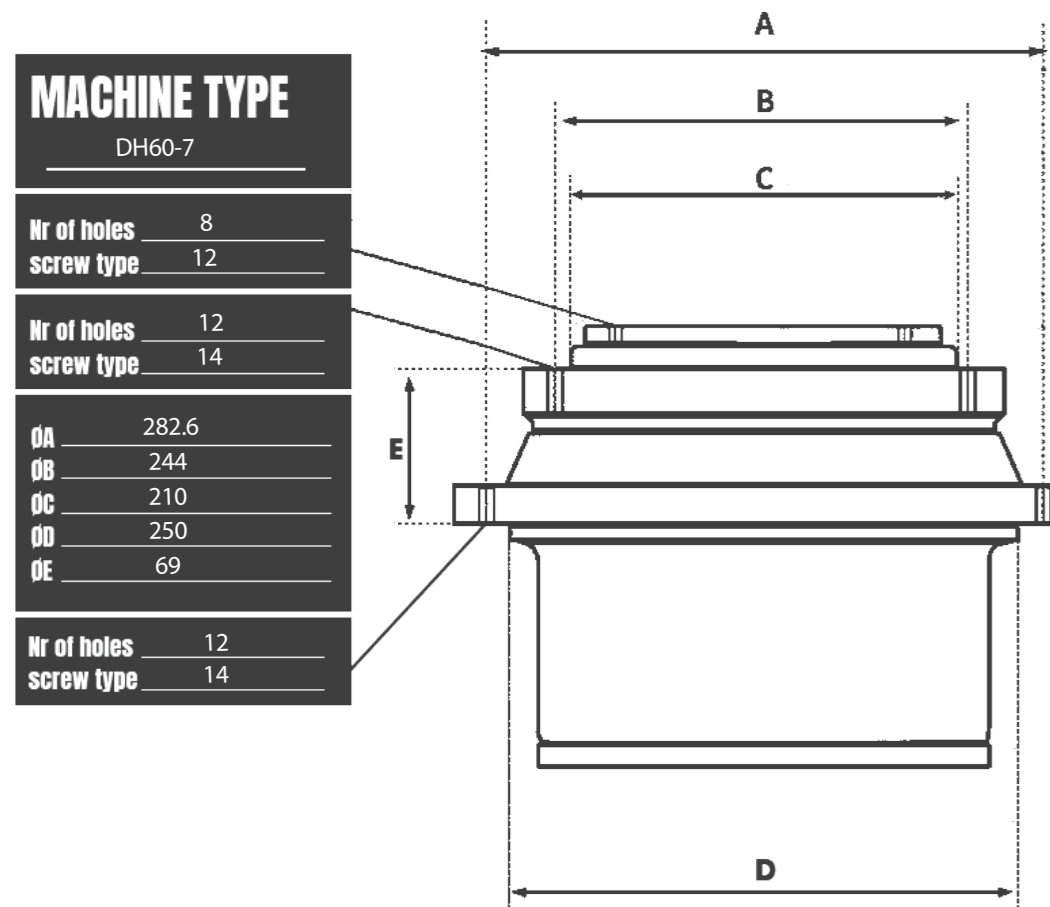
**ZAX200-3**

Number of frame hole	16-M20
Number of sprocket hole	18-M20
Motor connecting hole	9-M18
Application	ZAX200-3,ZAX210-5G



**ZAX330-3**

Number of frame hole	24-M20
Number of sprocket hole	22-M22
Motor connecting hole	8-M20
Application	ZAX330-3,ZAX330-5G



**DH80G**

Number of frame hole	12-M14
Number of sprocket hole	12-M14
Motor connecting hole	8-M12
Application	DH80G

**DH220-5**

Number of frame hole	30-M16
Number of sprocket hole	30(22+8)-M16
Motor connecting hole	12-M16
Application	DH220-5/7,EC210

**DH225-9**

Number of frame hole	30-M16
Number of sprocket hole	30(22+8)-M16
Motor connecting hole	12-M16
Application	DH225-9,SY195

**PC78**

Number of frame hole	14-M16
Number of sprocket hole	14-M14
Motor connecting hole	6-M12
Application	PC78US-6

**PC120-5**

Number of frame hole	20-M16
Number of sprocket hole	15-M16
Motor connecting hole	9-M14
Application	PC120-5,SK120-1/3/5

**PC200-7**

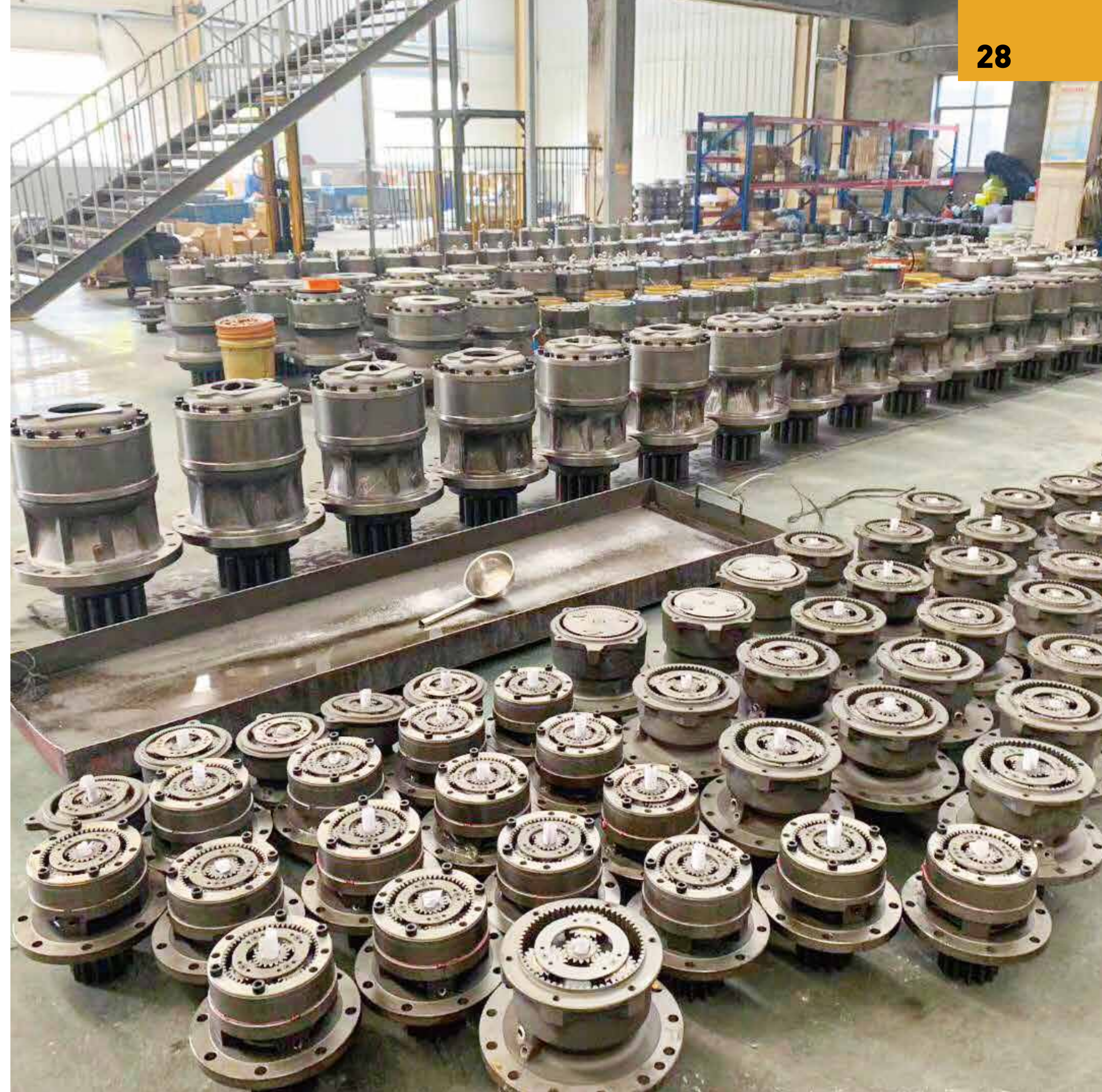
Number of frame hole	18M-16
Number of sprocket hole	20-M18
Motor connecting hole	4-M22
Application	PC200-6,PC200-7/8



Product model	Number of frame hole	Number of sprocket hole	Motor connecting hole	Application
DH60-7	12-M14	12-M14	8-M12	DH60-7,XE60
DH80G	12-M16	12-M14	8-M10	DH80G
TM18	20-M16	15-M16	8-M14	JCM913
DH220-5	30-M16	30-M16	12-M16	DH220-5/7,SY215/235-8,LG220,EC210
DH225-9	30-M16	30-M16	12-M16	DH225-9,SY195,XE215
DH258-7	20-M20	26-M18	9-M16	DH258-7,DX260LC
DH300-7	20-M20	24-M20	12-M16	DH300-5/7
DX300-7	20-M20	24-M20	6-M20	DH300-7,DX300-7,R300-5
DH370	20-M24	24-M20	6-M20	DH370-7-9
E305	12-M14	9-M14	6-M8	E305
E312	16-M16	15-M16	10-M14	E312V1/V2
E320C	16-M20	16-M20	4-M16	E320,E323,E320B/C/D
EC140	20-M16	18-M16	8-M14	EC140,XE150,FR170
EC240	30-M16	18-M18	12-M16	EC240
EC290	20-M20	16-M20	6-M20	EC290
EC360	26-M20	24-M20	6-M20	EC360
PC56	12-M14	12-M14	7-M10	PC55/56,SY55-9
PC60-6	12-M16	12-M14	8-M10	PC60-6/7,SK60-3/5
PC60-7	12-M16	12-M14	6-M12	PC60-7,E308,XE80
PC78	14-M16	14-M14	6-M12	PC78US-6
PC120-5	20-M16	15-M16	9-M14	PC120-5,SK120-1/3/5,SH120A1/A2,HD512
PC120-6	20-M16	15-M16	8-M10	PC120-6,PC130-7,SY135,SK135,LG915,SH120A3
PC200-6	18-M16	20-M18	12-M16	PC200-6
PC200-7	18-M16	20-M18	4-M22	PC200-6,PC200-7/8
PC200-8	18-M16	20-M18	4-M22	PC200-8MO
PC360-7	24-M20	20-M20	8-M20	PC300-7,PC350-7,PC360-7
R60-5	12-M14	12-M14	8-M10	DH55,R60-5,EC55
R60-7	12-M14	12-M14	8-M10	R60-7,SY65
R80-7	12-M16	12-M16	8-M12	R80-7
R110-7	16-M16	18-M16	8-M14	R110-7
R150-9	20-M16	21-M16	10-M12	R150-9
R225-9	30-M16	30-M16	16-M12	R20LC-7,R215/225-9,JMV147
R305-7	18-M24	26-M20	12-M16	R305/335-7/9,SY285/R320-7
R375-7	26-M20	24-M20	6-M20	R375-7,R385
ZAX60	12-M14	12-M14	8-M10	ZAX60
ZAX120	14-M16	16-M16	8-M14	ZAX120
ZAX200-3	16-M20	18-M20	9-M18	ZAX200-3,ZAX210-5G
ZAX240-3	16-M20	20-M20	9-M18	ZAX240-3,ZAX250-3
ZAX330-1	20-M20	20-M20	8-M20	ZAX330-1,ZAX330-6,ZAX350-6
ZAX300-3	24-M20	22-M22	8-M20	ZAX330-3,ZAX330-5G,ZAX360-3
EX120-1	15-M16	16-M16	2-M16	EX100-1,EX120-1
EX200-1	14-M20	16-M20	2-M16	EX200-1
EX200-5	14-M20	16-M20	8-M16	EX200-3/5
EX300-5	20-M20	20-M20	4-M18	EX300-5,EX350-5
SK140-8	20-M16	15-M16	10-M12	SK130-8,SK140-8
SK200-6	20-M20	22-M18	12-M16	SK200-6E
SK200-8	30-M16	26-M16	8-M16	SK200-8,SK210-8
SK230-6	20-M20	26-M18	10-M14	SK230-6,SK250-6
SK350-8	18-M24	26-M20	10-M18	SK330-8,SK350-8,SH350A3
SH265	16-M16	15-M16	9-M14	SH260-8,SH265,E110B
SH200	30-M16	22-M16	5-M12	SH200A1/A2,SH280,HD700-7,HD820-1
SH200A3	30-M16	30-M16	10-M14	SH200A3,HD820-3,SK250/260-8,SH210/240-5
YC60-8	12-M14	12-M14	6-M8	YC60,GM06VA

# SWING GEARBOX

Generally, rotary reducer is based on two-stage planetary deceleration mode, composed of vertical shaft, vertical shaft seat, gear ring, planetary gear, planetary gear and other components. The speed and torque matching are reasonable. It has high efficiency, low noise and other characteristics, and it can be matched with a variety of hydraulic rotary motors.



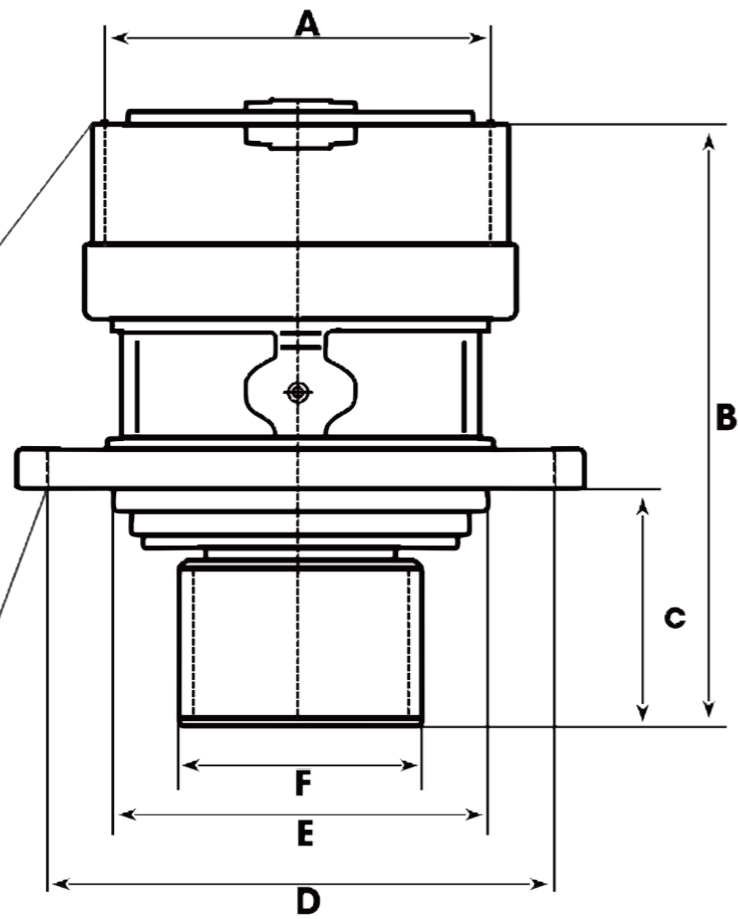
**MACHINE TYPE**

SK60-5

Nr of holes 8  
screw type 17.4

ØA 203  
ØB 306.8  
ØC 112.5  
ØD 260  
ØE 199.7  
ØF 101.6

Nr of holes 6  
screw type 13



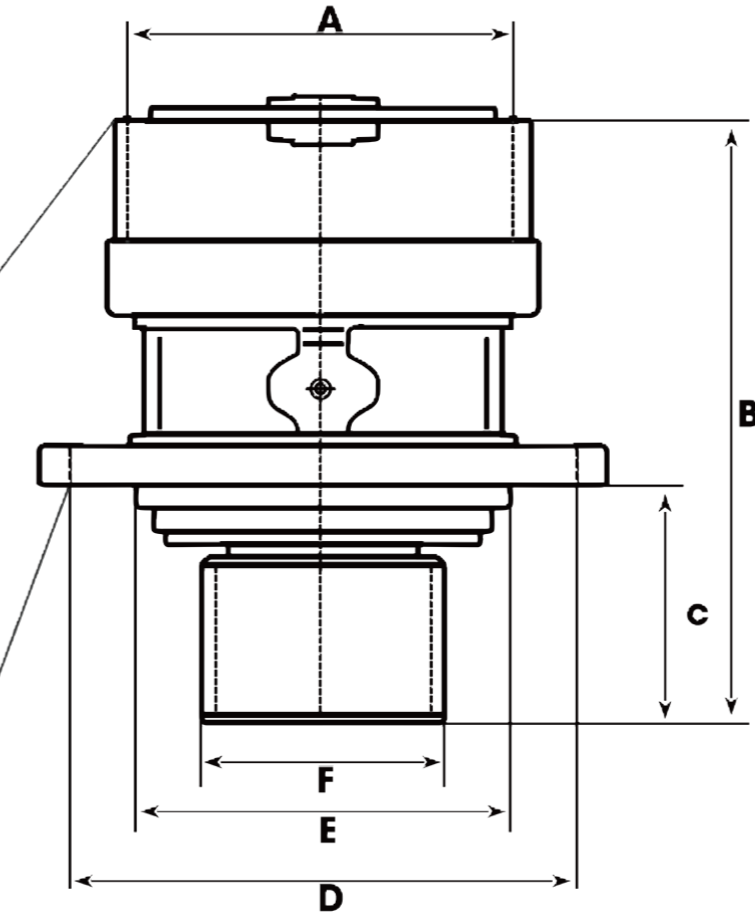
**MACHINE TYPE**

LG200(180)

Nr of holes 11  
screw type 22

ØA 282  
ØB 446.5  
ØC 163.5  
ØD 360  
ØE 310  
ØF 180.6

Nr of holes 14  
screw type 15



**SK75-8**

Bottom seat installing hole	8-17
Teeth number of vertical shaft	10T
Motor connecting hole	6-13
Application	SK75-8



**SK135**

Bottom seat installing hole	10-21
Teeth number of vertical shaft	11T
Motor connecting hole	12-13
Application	SK135



**SK200-8**

Bottom seat installing hole	13-21
Teeth number of vertical shaft	13T
Motor connecting hole	12-15
Application	SK200/210-8,SK200



**LG200(190)**

Bottom seat installing hole	11-22
Teeth number of vertical shaft	13T
Motor connecting hole	14-15
Application	SY215-8, LG922(RG10)



**LG225(190)**

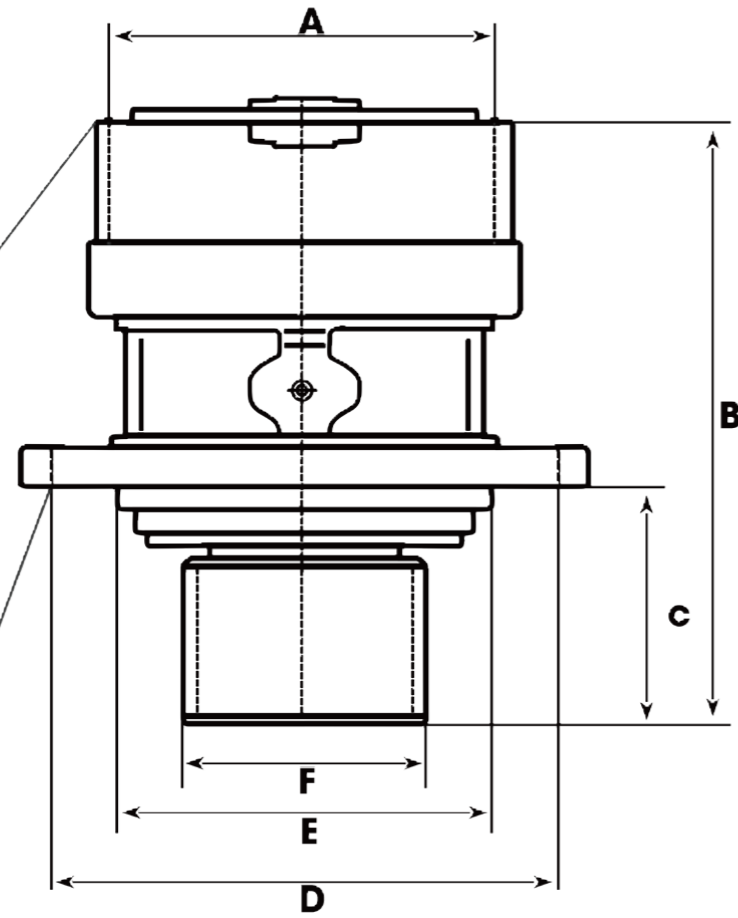
Bottom seat installing hole	11-22
Teeth number of vertical shaft	13T
Motor connecting hole	14-15.3
Application	YC230(RG11)



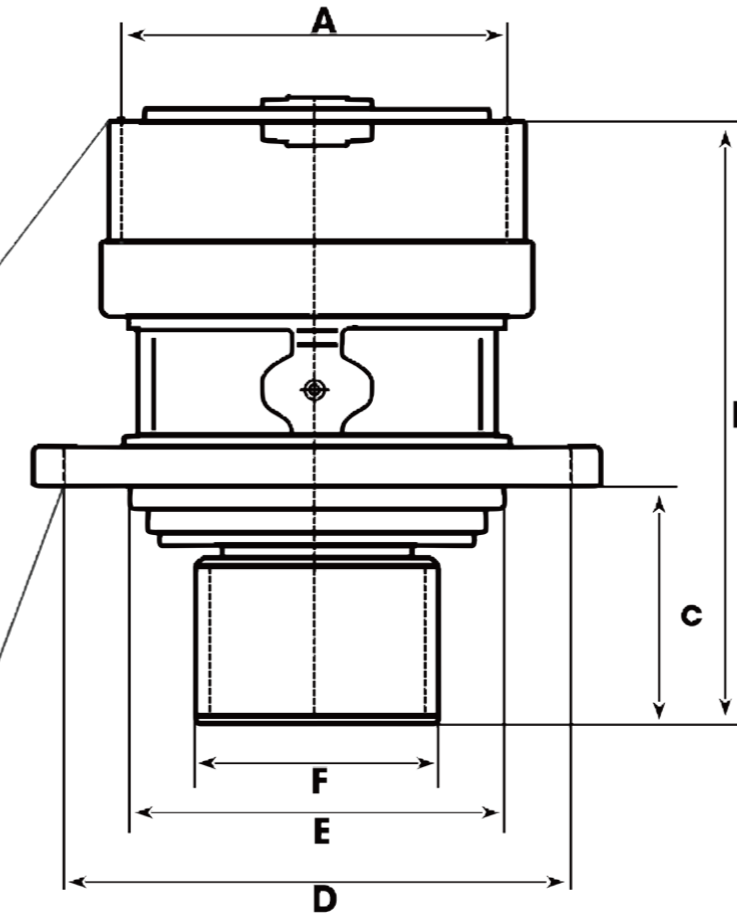
**LG240**

Bottom seat installing hole	13-22
Teeth number of vertical shaft	15T
Motor connecting hole	14-17.6
Application	LG240, SY235-8, XE215

MACHINE TYPE	
DH55	
Nr of holes	6
screw type	13
ØA	203
ØB	292
ØC	97
ØD	275
ØE	199.7
ØF	111.5
Nr of holes	8
screw type	17



MACHINE TYPE	
PC60-7	
Nr of holes	10
screw type	18
ØA	188
ØB	274.5
ØC	87.9
ØD	260
ØE	206
ØF	103.7
Nr of holes	12
screw type	12



DH220-5	
Bottom seat installing hole	11-22
Teeth number of vertical shaft	13T
Motor connecting hole	16-13
Application	DH220-5/7, DH215



DH258	
Bottom seat installing hole	14-22
Teeth number of vertical shaft	14T
Motor connecting hole	13-19
Application	DH258-8/7



DH370	
Bottom seat installing hole	8-17
Teeth number of vertical shaft	12T
Motor connecting hole	6-13
Application	DH80-7, DH80G, SY75



PC120-6	
Bottom seat installing hole	14-18
Teeth number of vertical shaft	11T
Motor connecting hole	13-13.5
Application	PC120-6, PC110-7



PC200-8	
Bottom seat installing hole	12-23
Teeth number of vertical shaft	13T
Motor connecting hole	6-M10
Application	PC200-8, PC210-8



PC220-7	
Bottom seat installing hole	14-22
Teeth number of vertical shaft	13T
Motor connecting hole	6-10
Application	PC220-7/8, PC240-8

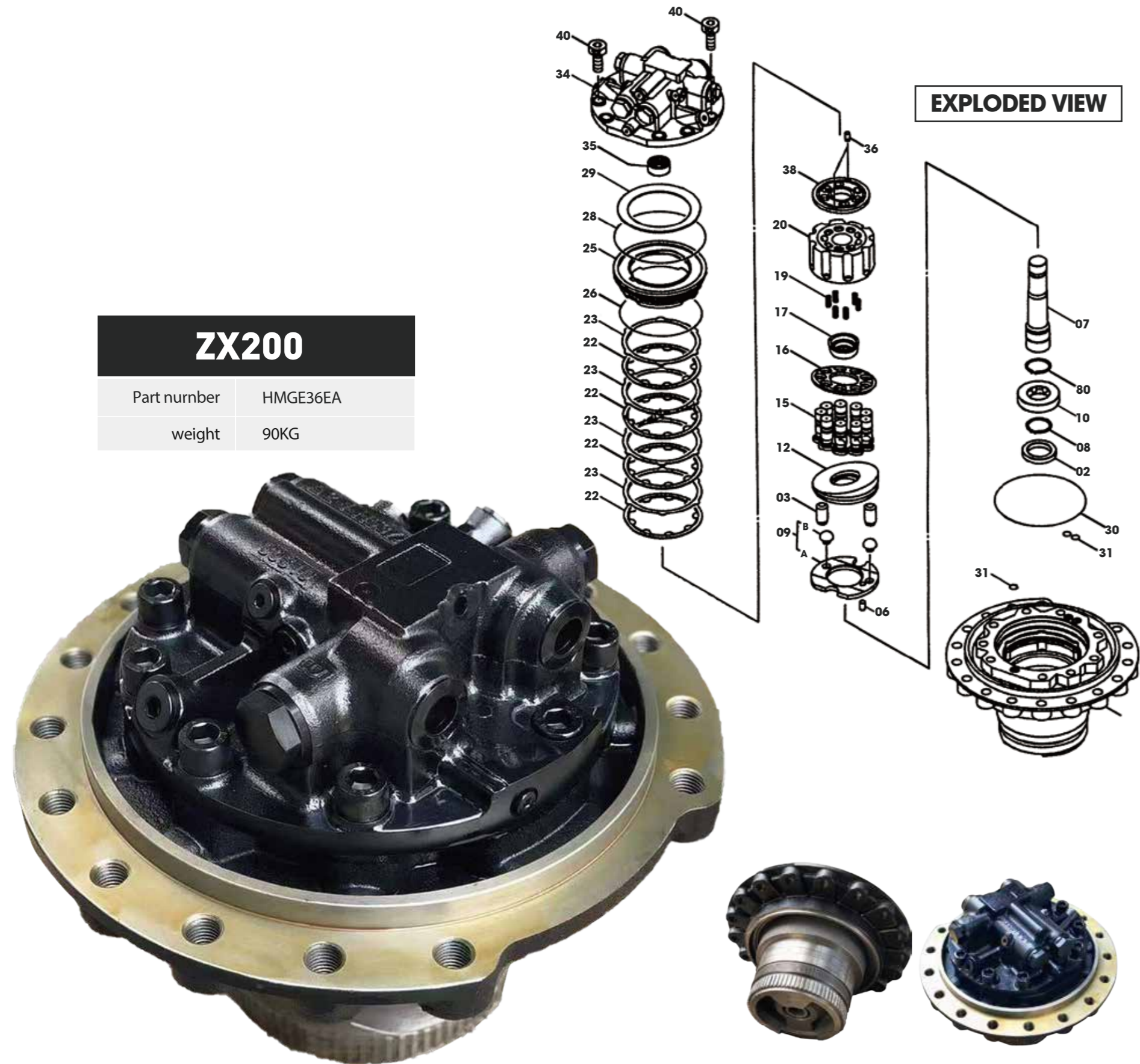


Product model	Bottom seat installing hole	Teeth number of vertical shaft	Motor connecting hole	Application
DH55	8-17	13T	6-13	DH55,DH60-7
DH80	8-17	12T	6-13	DH80-7,DH80G,SY75
DH150-7	9-18	10T	10-13.5	DH150-7
DH220-5	11-22	13T	16-13	DH220-5/7,DH215/225-7/9
DH225-7	11-22	13T	16-13	DH220-5/7,DH215/225-7/9
DH258	14-22	14T	13-19	DH258-5/7
DH300-7	12-26	14T	16-M12	DH300-7,DX300-7
DH370	12-26	14T	16-M12	DH300-7,DX300-7
DH500	11-22	15T	16-13	DH500
R55	8-16.5	13T	6-13	R55-7,R60-5
JMF29	7-17	13T	6-13	R60-7,XE60
R80-7	7-17	11T	6-13	R80-7
R130	9-18	12T	10-13.5	R130-5,R110-7,XE135
R210	10-22	13T	12-18	R200/210/215/225-5/7/9
R305-7	15-22	13/15T	12-20	R305-7,R335-7,R305-9
PC56	8-13.5	10T	6-M8	PC56-7
PC60-7	10-18	10T	12-12	PCPC60-7
PC120-6	14-18	11T	13-13.5	PC120-6,PC110-7,PC130-7
PC200-6	12-22	15T	22-16	PC200-6,PC220-6
PC200-8	12-23	13T	6-M10	PC200-8,PC210-8
PC220-7	14-22	13T	6-M10	PC220-7/8,PC240-8
SK60-5	8-17.4	10T	6-13	SK60-5,SK60SR,SK70SR
SK75-8	8-17	10T	6-13	SK75-8
SK135	10-21	11T	12-13	SK135
SK140-8	9-21.6	11T	12-13	SK130-8,SK140-8
SK200-6	13-21	13T	11-15	SK200-6/6E,SK200-7
SK200-8	13-21	13T	12-15	SK200/210-8
SK250-8	14-121	11T	17-15.2	SK250-8,SK260-8
SY75	8-17	12T	6-13	SY75
YC85	8-17	11T	6-13	YC85,XE80,SH60
SY135	9-18	11T	12-13	SY135,XE150,LG915
JCM913	9-18	12T	12-13	JCM913
LG240	13-22	15T	14-17.6	LG240,SY235-8,XE215
SH120	9-18	12T	8-13	SH120,YC135,JC8130
SH200	11-22	14T	16-13	ZSH200,SH210-5,CX210
SH280	11-22	13T	16-13	R200/210-3/5(SG08)
ZAX60	11-17	11T	2-M12	ZAX60
ZAX70	10-18	12T	8-16	ZAX70
EX200-5	12-22.5	13T	8-M12	EX200-5
E307	19-18	12T	6-13	E307V1/V2
E318	13-22	11T	12-13	E318
E320C	12-26	14T	16-18	E320C/D,E230
EC210	11-22	13T	8-M12	EC210
EC360	12-26	15T	4-M16	EC360
HD820	9-22	11T	16-13	SK130-8,SK140-8
YC60	6-17.5	14T	2-M12	YC60,LG906
DX60	6-17.1	14T	2-M12	DX60,SY60-9
E307-E	12-17	12T	6-M12	E307E
LG908	8-18	12T	4-M14	YC85,SY75,LG908,JCM908

# TRAVEL MOTOR

The motor is equipped with a high-pressure automatic variable device. When the high-speed gear is engaged, the circuit is connected with the oil from the manual speed change oil port to push the speed change valve to the left, so that the motor becomes small displacement; If the driving resistance increases and the oil pressure rises to the set value, the oil will push the shift valve to the right, and the motor will automatically change to the low-speed gear with large displacement to increase the torque.





<b>ZX200</b>	
Part number	HMGE36EA
weight	90KG



**EX200LC-5**  
Part number 9149087



**KYB MAG-180VP-6000**  
Part number KSA10100



**R220LC-9**  
Part number 31N6-40031BG



**E320 E325 E320D**  
Part number 2966298



**EC210B**  
Part number SA7117-30030



**EX200-2**  
Part number 9131678



**R305-7**

Part number 31N8-40062



**R330LC-9S**

Part number 31Q9-40011



**ZX120**

Part number 9181123



**EC460 EC480**

Part number 14733880



**ZX470-5G**

Part number 4699092



**R320LC-7**

Part number 31N9-40024



**ZX200-3**

Part number 9257254



**ZX330-3**

Part number 9281842



**ZX400LCH-3**

Part number 4668620



**PC300-7-8**

Part number 207-27-00440



**PC1250**

Part number 21N-60-34100




**ZX870**

Part number 4636857

# SWING MOTOR

The rotary motor transmits the rotational force to the rotary reduction device. The valve unit is mainly used to realize motor overload protection, rotary braking, reduce the hydraulic impact of the motor, and prevent cavitation. The rotary reduction device converts the rotational power transmitted from the traveling motor into low-speed high torque power to make the excavator work more efficiently



 <p><b>PC228</b></p> <table border="1"> <tr> <td>Part number</td> <td>706-7G-01180</td> </tr> <tr> <td>Applicable brand</td> <td>Komatsu</td> </tr> </table>	Part number	706-7G-01180	Applicable brand	Komatsu	 <p><b>R210-9 R220LC-9S</b></p> <table border="1"> <tr> <td>Part number</td> <td>39Q6-11101</td> </tr> <tr> <td>Applicable brand</td> <td>HYUNDAI</td> </tr> </table>	Part number	39Q6-11101	Applicable brand	HYUNDAI	 <p><b>PC60-7</b></p> <table border="1"> <tr> <td>Part number</td> <td>708-7T-00360</td> </tr> <tr> <td>Applicable brand</td> <td>Komatsu</td> </tr> </table>	Part number	708-7T-00360	Applicable brand	Komatsu
Part number	706-7G-01180													
Applicable brand	Komatsu													
Part number	39Q6-11101													
Applicable brand	HYUNDAI													
Part number	708-7T-00360													
Applicable brand	Komatsu													
 <p><b>SK350-8</b></p> <table border="1"> <tr> <td>Part number</td> <td>LC15V00022F1</td> </tr> <tr> <td>Applicable brand</td> <td>Kobelco</td> </tr> </table>	Part number	LC15V00022F1	Applicable brand	Kobelco	 <p><b>SK260-8</b></p> <table border="1"> <tr> <td>Part number</td> <td>LQ15V00015F1 &amp; F2</td> </tr> <tr> <td>Applicable brand</td> <td>Kobelco</td> </tr> </table>	Part number	LQ15V00015F1 & F2	Applicable brand	Kobelco	 <p><b>SK120</b></p> <table border="1"> <tr> <td>Part number</td> <td>YW32W00004F1</td> </tr> <tr> <td>Applicable brand</td> <td>Kobelco</td> </tr> </table>	Part number	YW32W00004F1	Applicable brand	Kobelco
Part number	LC15V00022F1													
Applicable brand	Kobelco													
Part number	LQ15V00015F1 & F2													
Applicable brand	Kobelco													
Part number	YW32W00004F1													
Applicable brand	Kobelco													
 <p><b>E312C E312E</b></p> <table border="1"> <tr> <td>Part number</td> <td>170-9893</td> </tr> <tr> <td>Applicable brand</td> <td>Caterpillar</td> </tr> </table>	Part number	170-9893	Applicable brand	Caterpillar	 <p><b>E318 E319C</b></p> <table border="1"> <tr> <td>Part number</td> <td>148-4644</td> </tr> <tr> <td>Applicable brand</td> <td>Caterpillar</td> </tr> </table>	Part number	148-4644	Applicable brand	Caterpillar	 <p><b>E330B E325B</b></p> <table border="1"> <tr> <td>Part number</td> <td>1077054</td> </tr> <tr> <td>Applicable brand</td> <td>Caterpillar</td> </tr> </table>	Part number	1077054	Applicable brand	Caterpillar
Part number	170-9893													
Applicable brand	Caterpillar													
Part number	148-4644													
Applicable brand	Caterpillar													
Part number	1077054													
Applicable brand	Caterpillar													

**ZX200-3/-5**

Part number	4330222
Applicable brand	Hitachi

**ZX330-3 ZX330-5G**

Part number	4616985
Applicable brand	Hitachi

**ZX225US ZX240**

Part number	4398514
Applicable brand	Hitachi

**DH55 DH60**

Part number	401-00307B
Applicable brand	Doosan

**DH80**

Part number	2404-9007
Applicable brand	Doosan

**DH150-7**

Part number	401-00003B
Applicable brand	Doosan

**EC135B EC140B**

Part number	VOE14524188
Applicable brand	Volvo

**EC200B EC210C**

Part number	VOE14552686
Applicable brand	Volvo

**EC330 EC360**

Part number	VOE14512786
Applicable brand	Volvo

**R210-7 R215-7**

Part number	31N6-10210
Applicable brand	Hyundai

**R210-9 R235-9**

Part number	39Q6-11101
Applicable brand	Hyundai

**R290LC-7 R300LC-9S**

Part number	31Q8-10130
Applicable brand	Hyundai

**DX225-7 S225**

Part number	K1000697A
Applicable brand	Doosan

**DX340 DX420**

Part number	K1007543A
Applicable brand	Doosan

**DX255**

Part number	401-00352
Applicable brand	Doosan

**JS200 JS210**

Part number	20/925315
Applicable brand	JCB

**JS330**

Motor No	M2X210CHB
Applicable brand	JCB

**JCB220**

Motor No	MFC160
Applicable brand	JCB

# HYDRAULIC PARTS

Hydraulic parts divide into parts of hydraulic pump, travel motor, swing motor  
 Mainly include cylinder block, valve plate, piston shoe, set plate, swash plate and support, drive shaft, etc.  
 Different models do not include totally the same parts  
 The sizes meet general international standard, can be used together with other brand, steady quality





**A6VM** 55-59-80-86-107-115-160-172-200-250



**A7V** 55-80-107-160-225-250-355-550



**A6VM** 55-59-80-86-107-115-160-172-200-250



**A8V55** A8V86 A8V107 A8V115 A8V055 A8V059  
A8V0107 A8V0160 A8V0200



**A8V0** 55-80-107-120-140-160-200



**A10V** 17-21-23-28-40-43



**A11VS0** 40-60-75-95-130-145-160-190-260



**AP2D21** AP2D25 AP2D28 AP2D36



**AP12** SBS80 SBS120 SBS140



**GM** 02-03-04-05-06-08-09-18-23-24-28-30-35-38



**GM06 GM09**



**HMGC** 16-32-48 **HMGF** 35-37-48-49-57-68-84 **HMV** 110-160



**HPV** 35-55-75-90-95-110-132-140-160-165-375



**HPV 116-145**



**HPV** 050-102-105-118-135



**HPV35** HPV55 HPV75 HPV95 HPV132 HPV140 HPV160



**HPV050** HPV0102 HPV0118 HPV145



**HPV091** (EX100, 200-2, 3 EX120-2)



**HPV116 HPV145**



**JMF 23-27-29-33-36-43-64-68-151-195**



**K3SP 30-36**



**K3V63 K3V112 K3V140 K3V180**



**K3VL 28-45-60-80-112-140-160-200**



**KMF 40-90-160 KPV 90-105**



**M2X 63-96-120-146-150-170-210**



**M5X 130-180**



**MAG150VP MAG170VP MAG180VP**



**MX 50-80-150-173-200-250-450-500-530-750**



**PSV2-55T PSV2-62T PSV2-63**



**SG 015-025-03-04-08-15-20 MFB 80-150-160-170-180-190-200-250**



We produce different hydraulic parts. We have a variety of quality, original or our own production can be sold to you, looking forward to cooperating with you

# GEAR PARTS

Gear parts are the parts of travel gear boxes and swing gear boxes. We offer them separately or as a whole set of accessories. There are several choices of quality. We support them whether you are wholesale or retail





**EX120-1**

Product Name	Final drive gear ring
Part number	1010014
General model	EX120-1;EX100



**EC360**

Product Name	Swing gearbox first sun gear
Part number	SA8230-22760
General model	EC360



**EC210**

Product Name	Final drive first planetary gear assy and second sun gear
Part number	SA7117-30270
General model	EC210



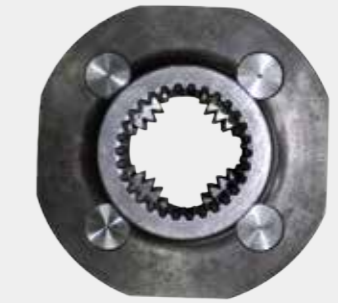
**SK210-8**

Product Name	drive gearbox first planetary gear assy
Part number	87602333
General model	JCB220 SK210-8



**R265-9**

Product Name	swing motor cover
Part number	XKAY-01956
General model	R265-9



**EC700**

Product Name	swing gearbox second planetary assy
Part number	VOE14535300
General model	EC700



**PC300-6**

Product Name	Swing first planetary gear assy with sun gear
Part number	207-26-62140
General model	PC300-6



**R360-7**

Product Name	Swing gearbox vertical shaft gear
Part number	XKAQ-00163
General model	R360-7 R375



**R250-7**

Product Name	Flame
Part number	XKAQ-00177
General model	R250-7



**R330LC-9S**

Product Name	sun gear
Part number	XKAH-01427
General model	R330LC-9S R330LC-9S



**R330LC-9S**

Product Name	swing gearbox second planetary assy
Part number	XKAH-01241
General model	R330LC-9S R330LC-9S



**EX30UR**

Product Name	drive shaft
Part number	MAG18VP-230F-5
General model	EX30UR



**PC200-7**

Product Name	final drive plug
Part number	708-8F-31110
General model	PC200-7



**PC200-8**

Product Name	Final drive hub
Part number	20Y-27-42520
General model	PC200-8



**PC300-6**

Product Name	swing second planetary gear assy
Part number	20Y-27-22170
General model	PC300-6



**EX225-5**

Product Name	gear ring
Part number	1014493
General model	EX225-5 EX220-5



**EX120-5**

Product Name	swing shaft
Part number	2036830
General model	EX120-5



**PC200-5**

Product Name	drive gearbox second planetary gear assy
Part number	20Y-27-13210
General model	PC200-5



**SK350-8**

Product Name	sun gear
Part number	LC15V000235022
General model	SK350-8



**R320LC-9**

Product Name	swing gearbox first planetary gear assy
Part number	XKAH-01245
General model	R320LC-9



**R250LC9**

Product Name	Final drive gearbox second planetary gear assy
Part number	XKAQ-00535
General model	R250LC9, R250LC9A, R260LC9S, R290LC9, R290LC9MH, R300LC9A



**EC700**

Product Name	swing gearbox second planetary assy
Part number	VOE14535300
General model	EC700



**E336D**

Product Name	sun gear
Part number	XKAH-01427
General model	R330LC-9S



**R330LC-9S**

Product Name	swing gearbox second planetary assy
Part number	XKAH-01241
General model	R330LC-9S



**PC300-6**

Product Name	swing second planetary gear assy
Part number	20Y-27-22170
General model	PC300-6



**PC200-8M0**

Product Name	Final drive hub
Part number	20Y-27-42520
General model	PC200-8M0



**PC200-7**

Product Name	final drive plug
Part number	708-8F-31110
General model	PC200-7



**EX30UR**

Product Name	drive shaft
Part number	MAG18VP-230F-5
General model	EX30UR



**EX225-5**

Product Name	gear ring
Part number	1014493
General model	EX225-5 EX220-5



**EX120-5**

Product Name	swing shaft
Part number	2036830
General model	EX120-5



**PC200-5**

Product Name	drive gearbox second planetary gear assy
Part number	20Y-27-13210
General model	PC200-5



**JCB220**

Product Name	drive gearbox first planetary gear assy
Part number	87602333
General model	JCB220 SK210-8



**R265-9**

Product Name	plug
Part number	XKAY-01956
General model	R265-9



**SK350-8**

Product Name	sun gear
Part number	LC15V000235022
General model	SK350-8



**R320LC-9**

Product Name	XKAH-01245
Part number	swing gearbox first planetary gear assy
General model	R320LC-9



**R250LC9**

Product Name	Final drive gearbox second planetary gear assy
Part number	XKAQ-00535
General model	R250LC9, R250LC9A, R260LC9S, R290LC9, R290LC9MH, R300LC9A

# DISPLAY COMPUTER

The computer version is classified as: Engine board hydraulic board information board

Some excavators are divided into EFI and direct injection. The computer version of EFI and direct injection is different.

All computer versions are tested and delivered with programs, and can be installed after the customer gets them.

Display screen: all are of domestic high-end quality, matched according to the model. Each display screen will be tested and the detection video will be provided to the customer.



**DH225-7 DH420**

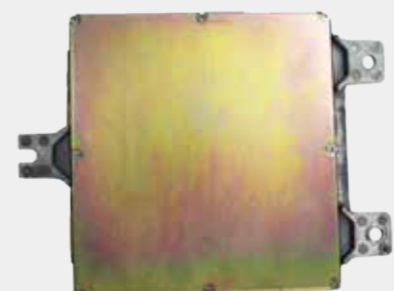
Part number 543-00074

**DH300-7 S300LC-V**

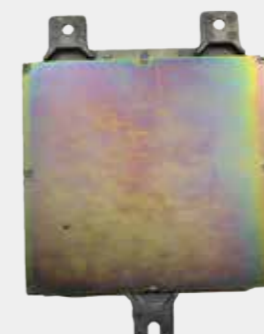
Part number 0806-8525-004 543-00055A

**S420LC-V DH420-7**

Part number 534-00058C

**E313C**

Part number 221-8957

**E314C**

Part number 260-2065HE00

**E320B**

Part number 164-8285

**ZX200-5G ZX350-5G**

Part number YA00002098

**DX225**

Part number 11201-7017

**DX150W**

Part number 65.11201-7017

**E320D**

Part number 366-8821

**E305**

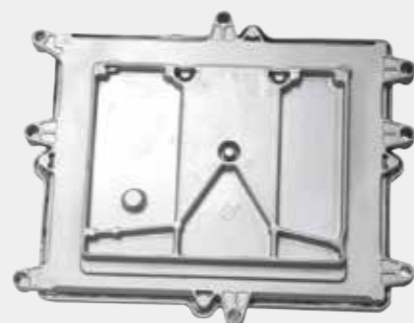
Part number LB22E00010F

**EX120-3**

Part number 9131576

**DX225**

Part number 65.11201-7017

**DX300**

Part number 65.11201-7016

**JY210E**

Part number 2543-1036 300611-00123

**EX200-2 EX200-3**

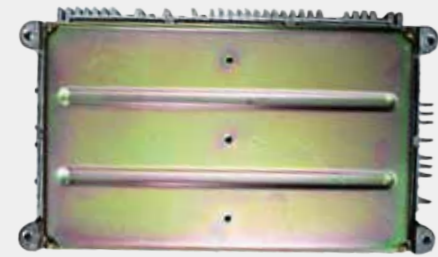
Part number 9125533

**ZX225US-3**

Part number 4HK1 8981481750

**SK130-6**

Part number YX22E00001F5

**SK135SR**

Part number YY22E00014F1

**SK200-5**

Part number YN22E00015F2

**SK200-8**

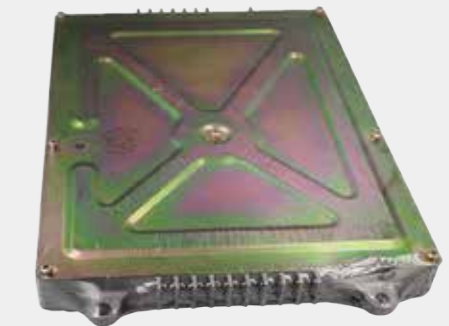
Part number J05E 89663-E0750B

**R220LC-9S**

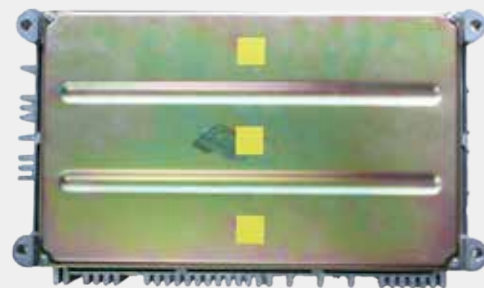
Part number 21Q6-32181

**R140LC-9**

Part number 21Q4-32100

**ZX200-5 ZX120-5**

Part number 0017848

**SK210-6 SK200-6E**

Part number YN22E00153F1

**EC460B**

Part number 20582958

**EC210**

Part number 60100002

**PC200-7 PC220-7**

Part number 7835-26-1009

**E322C**

Part number 156-6155

**R210-7 R140-7**

Part number 21N6-44103

**EC240**

Part number 14518349

**EC290B**

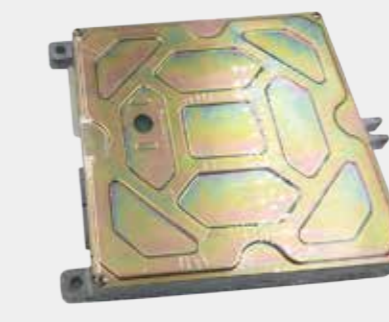
Part number 20577135 60100002

**EC460B**

Part number 20582958

**PC200-8 PC300-8**

Part number 4921776 A38156138

**PC200-6 PC120-6**

Part number 7834-10-2003

**E336D2**

Part number 309-5710

**JCB220**

Part number 332/K4244

**DX225-9C DX340-9C**

Part number 300426-00196A

**E307E E308E**

Part number 416-4285

**PC200-8M0**

Part number 7835-34-1002

**PC200-7**

Part number 7835-12-3007

**PC200-5**

Part number 7824-72-2001

**E320C E312C**

Part number 260-2160

**ZAX200-3**

Part number 4652262

**SY215-9**

Part number 11888261

**R215-7**

Part number 21N8-30013

**EC300D**

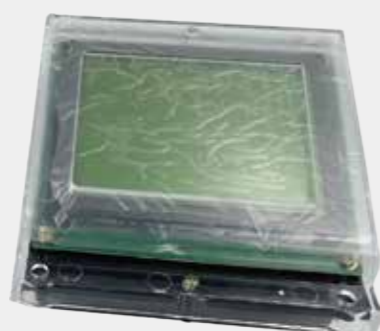
Part number 14640102

**E311D E312D**

Part number 260-2193

**SY215-8**

Part number 135-215-330

**SK120-5.5**

Part number YN10M000025013

**PC228US-3**

Part number 7835-10-2005

**SH200-A6**

Part number khr23594

**PC300-8**

Part number 7835-31-5009

**CAT320C**

Part number 260-2160

**DX140**

Part number 529-00076E

**DX225**

Part number 53900076 300426-00012

**E307 E307E**

Part number 416-4285X

**SK200-2**

Part number YN5950002F5

**SK200-6**

Part number YN59E00017F1

**SK200-8**

Part number YN59500021F2

**EC210B**

Part number 14636301 14390065P03

**EC480D**

Part number 14609502 14640101

**R215-9S**

Part number 21Q6-30105 21Q6-33401

**PC200-8**

Part number 7835-31-1004

**ZX200-1**

Part number YA00030724

**ZX200W**

Part number 4653783 4653780

**LG200 LG220**

Part number 14518349

**PC200-6**

Part number 7834-72-4001

**PC130-7**

Part number 7835-10-5000

**R210LC-9 R140LC-9**

Part number 21Q6-30103

**SK200-10**

Part number YN59500039

**E325B**

Part number 106-0172

# SOLENOID VALVE

Solenoid valve structure: including (coil, magnet and ejector rod).  
Working principle of solenoid valve: when the coil is connected with current, magnetism will be generated, and the magnet will attract each other, and the magnet will pull the ejector rod. When the power is turned off, the magnet and the ejector rod are reset, so that the solenoid valve completes the work process.  
The solenoid valve is generally used in the hydraulic system to close and open the oil circuit.



**E320B**

Part number 121-1490

**HD513**

Part number K-G24LE4-22

**SH200A5**

Part number LL001140

**SK200-8**

Part number KDRDE5KR-31 40C50-213 49F1

**EC210B**

Part number VOE14574269

**SK200-6**

Part number MC609-7421120

**ZX450 ZX240-5G**

Part number 0976504 723-30-90400

**PC130-8 PC300-8**

Part number 702-21-07610

**ZX210-5G ZX200-5G**

Part number 92182341

**R290LC-7**

Part number XJBN-00382

**E320B E320C**

Part number 139-3990 51-8368

**PC200-3 PC200-5**

Part number 7080-2H25240 708-23-18272

**SK135**

Part number 30C50-140

**E320B**

Part number 121-1490

**SK100-3 SK120-3**

Part number YN35V00020F1 KWESK-31

**PC200-6 PC210LC-6K**

Part number 20Y-60-2212 1206-60-51132

**PC200-8**

Part number 702-21-57600

**PC360-7 PC400-7**

Part number 702-21-55701

**E320B E320C**

Part number 3140C30-137 111-9916

**E320B E320C**

Part number 121-1491

**PC200-7**

Part number 702-21-57400

**PC120 PC60-7**

Part number 203-60-56560

**PC220LC-8**

Part number 702-21-57400

**PC200-7**

Part number 20Y-60-32120

**SY215-8**

Part number 3130C50-140

**SK350-8**

Part number 3130C50-143

**SK330-6**

Part number KDRDESK-3130C50-111

**SY215-8**

Part number KDRDESK-3130C50-140

**PC78UU**

Part number 21W-60-42120

**ZX240LC-5G**

Part number 0976504

**SK200-8**

Part number KWE5K-31G24YB50 YN35V00051F1

**SK200-6**

Part number KWE5K-31G24DA40 YN35V00020F1

**SK200-5**

Part number G24D12

**SH200A5**

Part number LL001140

**PC200-6**

Part number 702-21-07010

**ZX200LC-3**

Product Name 9258047

# RELIEF VALVE

The overflow valve is composed of main valve and pilot valve. Constant pressure overflow function of the overflow valve: in the throttling regulation system of the constant displacement pump, the constant flow is provided by the constant displacement pump. When the system pressure increases, the flow demand decreases. At this time, the overflow valve is opened to overflow the excess flow back to the oil tank to ensure that the inlet pressure of the overflow valve, that is, the outlet pressure of the pump, is constant (the valve port is often opened with the pressure fluctuation).





**AV170**

Part number BLR-179



**DH220-9**

Part number BLR-238



**DX60**

Part number BLR-249



**EC55**

Part number BLR-239



**EC210B**

Part number BLR-163



**EC360B**

Part number BLR-185



**DX420**

Part number BLR-170



**E307D**

Part number BLR-251



**E312**

Part number BLR-241



**EC460**

Part number BLR-245



**EC480**

Part number BLR-156



**EX120-2**

Part number BLR-159



**E323D**

Part number BLR-240



**E330**

Part number BLR-166



**E349**

Part number BLR-181



**GM4-15**

Part number BLR-182



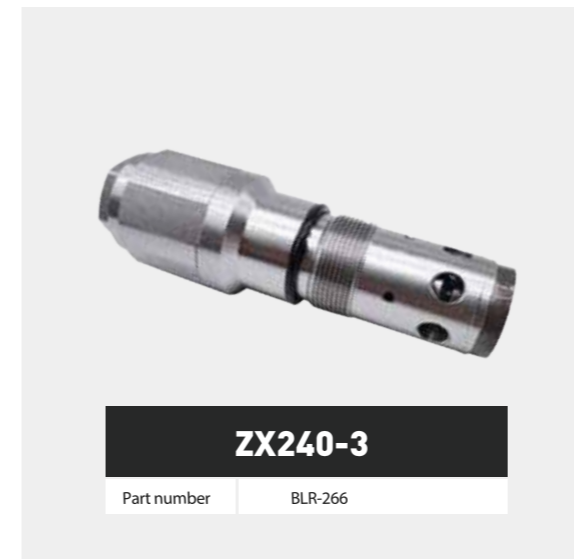
**JCM70**

Part number BLR-198



**KYB20**

Part number BLR-284



# FAN PUMP

The fan pump is divided into gear wheel type and plunger type; The main function of the fan pump is to supply oil to the fan motor and promote the conversion of mechanical energy into kinetic energy.



**EC360**

Part number 14505903



**E345D E349**

Part number 295-9426



**EC700**

Part number 14531612



**CAT345C**

Part number 247-8917



**E330C**

Part number 283-5992



**E330D E336D**

Part number 259-0815



**EC480D**

Part number 14602247



**EC360**

Part number 14530502



**E325C**

Part number 200-3406

**R520LC-9**

Part number 31Q4-30202

**R485 R385**

Part number 31QB-30130

**A35F A35E A40E**

Part number 15020179

**E365C E365B**

Part number 247-8968 311-9550

**E972H E938H**

Part number 254-5147 254-5145

**EC360B EC330B**

Part number 14530502

**EC460B**

Part number 14537295

**EC380**

Part number 15054375

**CAT416E CAT422E**

Part number 350-0666

**EC460**

Part number 14561970

**EC240**

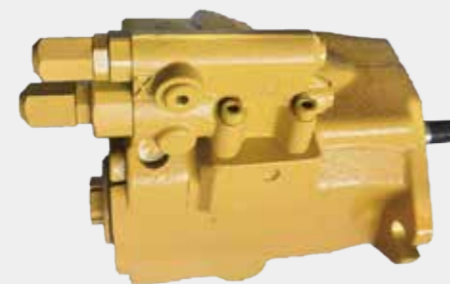
Part number 14524186

**CAT416E**

Part number 307-3063

**A25F, A25F/G**

Part number 15140666 17458128

**950H 962H**

Part number 254-5146

**E320D**

Part number 250-8337

**CAT345B**

Part number 295-0814

**E322C E324D**

Part number 190-8970

**E330D E336D**

Part number 259-0815

# FAN MOTOR

Fan motor is divided into vane type and plunger type; They are all hydraulically driven, and their functions are to assist in heat dissipation



**E325C**

Part number 179-9778



**E330C**

Part number 191-5611



**E330D E336D**

Part number 234-4638



**E345B E330DL**

Part number 155-9107



**ZX450-3 ZX470-3**

Part number YA0005829



**WA430-6**

Part number 708-75-00550



**L220E L180E**

Part number 11410665



**EC700**

Part number 14531612



**EC360 EC380**

Part number 14533496

**MFE19**

Part number B210074

**EX870 MSF50-48**

Part number B0440-50005

**ZX450L-3**

Part number 4634936

**E365C E385B**

Part number 247-8978

**E345D E349**

Part number 295-9429

**E345CL**

Part number 266-8034

**D705 KYB55 MSF4**

Part number 20460-34604

**E980G**

Part number 161-8919

**E825G**

Part number 129-2413

**ZAX470**

Part number YA00005829

**125A/225A**

Part number B210835

**A25D A30D A40F**

Part number V0E1111652

**CAT980H**

Part number 255-6805

**E986 E986H**

Part number 370-7601

**E385B E385C**

Part number 200-3252

**SY485**

Part number 60248398

**WA380-5 WA470**

Part number 708-75-00530 708-75-00710

**R520-9**

Part number 31Q4-30201

# REGULATOR REGULATOR

The Regulator is divided into hydraulic control and electric control. It mainly includes three aspects: power control, power shift control and reverse flow control.

Its working principle is mainly to control the output of the hydraulic pump, the power of the hydraulic pump, the tilt angle of the swash plate and the power shift of the pump.



**K5V212DPH**

Model EC480



**K5V212DPH**

Model E345D E349



**K3V112DT-HN**

Model DH220-5 DH225-7



**HPV0102FW-RE23B**

Model EX200



**HPV0102GW-RH23A**

Model EX200-5



**HPV145GW**

Model ZAX330-1 ZAX350



**K3V63 (9C00 TYPE)**

Model R130-5 R150-7



**HPV0118HW-RH26A**

Model ZAX200-3



**K3V112 (3L02 TYPE)**

Model R210-7 EC210



# GEAR PUMP

Gear pump works by gear engagement, which is divided into external gear pump and internal gear pump according to different engagement forms. A pair of gears with identical geometric parameters (tooth width  $b$ , tooth number  $Z$ ), pump body, front and rear cover plates, long and short shafts.



**DH370-7 DH370-9**

Pump no 401-002548



**DH500**

Pump no K9001918



**E320 E312 E310C**

Pump no 126-2016



**SK135**

Pump no 2902440-3633A



**CX55 SK55**

Pump no AP2D36



**ZX60 ZX70**

Pump no AP2D36



**WA70**

Pump no 705-51-11020



**EX100-1**

Pump no 9217993



**EX200-5**

Pump no 4276918



**EX200-2**

Pump no 4255303



**ZX225 ZX180**

Pump no 4278696



**SK200-5 SK120-5**

Pump no 2437U157F1



**R360LC-7**

Pump no XJBN-00520



**R55-7**

Pump no XKAH-00855



**R60-6 R60-7**

Pump no XJDH-02362



**WA320-6**

Pump no 705-56-34290



**SK130-9 SK140-8**

Pump no YY10V00015F1



**EC360**

Pump no 14561971



**PC78-6E0**

Pump no 708-3T-04620



**PC120-2 PC120-1**

Pump no 705-56-34000



**PC50MR-2**

Pump no 708-3S-04573



**WA120-1**

Pump no 705-11-34011



**EC360-S EC480D**

Pump no 14602247



**EC460**

Pump no 14561970



**PC40-7**

Pump no 705-41-08090



**PC40-6**

Pump no 705-41-08010



**PC30MR-2**

Pump no 705-41-02700

# SLEW BEARING

Big turntable: actually, it is just a big bearing. As for the power of its rotation, first of all, the main power of the excavator comes from the engine. The engine transfers the power to the hydraulic pump, which provides hydraulic power. The high-pressure oil output by the hydraulic pump is transmitted to each action through the distribution valve.



SLEW BEARING SLEW BEARING SLEW BEARING SLEW BEARING SLEW BEARING SLEW BEARING  
SLEW BEARING SLEW BEARING SLEW BEARING SLEW BEARING SLEW BEARING  
SLEW BEARING SLEW BEARING SLEW BEARING SLEW BEARING SLEW BEARING SLEW BEARING  
SLEW BEARING SLEW BEARING SLEW BEARING SLEW BEARING SLEW BEARING SLEW BEARING  
SLEW BEARING SLEW BEARING SLEW BEARING SLEW BEARING SLEW BEARING SLEW BEARING





model number	OD	ID	overall height	Inner Height	OUTER Height	external opening	inner bore	teeth	Weight
PC30-2(92Z)	614.5	452	53.5	40	43.5	20-φ13.5	20-φ13.5	92	42
PC50-7	748	573.5	60	50	50	27-φ14	24-φ14	90	73
PC60-5 (80Z)	852	627	75	58	62	24-φ18	24-φ18	80	100
PC60-6 (76Z)	806	596	74	59	61	24-φ18.5	24-φ18.5	76	93
PC60-6 (80Z)	852	627	75	58	62	24-φ18	24-φ18	80	105
PC60-7(76Z)	806	596	74	59	61	23-φ18.5	24-φ18.5	76	94
PC60-7(80Z)	852	627	75	58	62	22-φ18	24-φ18	80	103
PC70	806	596	74	59	61	24-φ18.5	24-φ18.5	76	93
PC75	852	627	75	58	62	24-φ18	24-φ18	80	105
PC78	852	627	74	74	61	25-φ18	24-φ18	80	105
PC100-3	1112	872.5	75	65	62	30-φ18	30-φ18	89	153
PC100-3	1112	872.5	75.5	65	62	30-φ18	30-M16	89	156
PC120-3	1200	964	90	78	80	35-φ22	36-M20	98	203
PC128	1111	882	77	65	64	34-φ18	38-φ18	90	150
PC120-6(4D95)	1111	882	77	65	64	34-φ18	38-φ18	90	150
PC120-6(4D102)	1106	884	75	65	64	34-φ18	36-M16	90	149
PC120-6E	1122	824	100	90	85	36-φ22	36-φ22	83	246
PC100-5	1111	873	75.75	65	63	38-φ18	38-φ18	89	154
PC120-5	1111	873	75	65	63	38-φ18	38-φ18	89	154
PC130-7	1106	884	75	65	64	34-φ18	36-M16	90	149
PC150-5	1190	922	83	73	67	26-φ22.5	30-φ22	94	197
PC160-7	1224	973	82	67	74	32-φ24	36-M20	99	195
PC200-2	1209	916	95	80	85	22-φ24	36-φ24	78	251
PC200-3	1303	1084	104	81	90	26-M22	36-M20	110	228
PC220-3	1303	1084	104	81	90	26-M22	36-M20	110	228
PC220-5	1302	1084	110	87	90	26-M24	36-M20	110	232
PC200-5	1302	1084	110	87	90	26-M24	36-M20	110	232

model number	OD	ID	overall height	Inner Height	OUTER Height	external opening	inner bore	teeth	Weight
PC200-6 (S6D102)	1323	1084	100	77	90	32-φ24	36-M20	110	248
PC200-6(S6D95)	1323	1084	100	77	90	32-φ26	36-M20	110	240
PC220-6(S6D95)	1323	1084	100	77	90	32-φ26	36-M20	110	240
PC200-7 (Z=110)	1323	1084	100	77	90	32-φ24	36-M20	110	248
PC200-6 (S6D102)	1323	1084	100	77	90	32-φ24	36-M20	110	248
PC200-8(Z=96)	1321	1080	100	77	90	32-φ24	36-M20	96	240
PC220-7(Z=92)	1323	1073	112	77	102	32-φ24	36-M22	92	261
PC220-8(Z=92)	1323	1073	112	77	102	32-φ24	36-M22	92	261
PC270-7	1533	1235	125	97	113	35-φ26	40-M24	90	419
PC300-3	1526	1236	122	87	110	35-M24	40-M24	90	377
PC300-5	1526	1236	122	97	110	35-M24	40-M24	90	389
PC300-6	1532	1235	125	95	113	35-φ26	40-M24	90	399
PC300-7	1532	1235	125	95	113	35-φ26	40-M24	90	399
PC350-6	1532	1235	125	95	113	35-φ26	40-M24	90	399
PC350-7	1532	1235	125	95	113	35-φ26	40-M24	90	399
EX40-1	615	446	59	40	50	24-φ13.5	20-φ13.5	76	45
EX60-1	781	554	78	60	65	24-φ18	24-φ18	71	98
EX70-5	774	554	78	60	65	24-φ18	24-φ18	71	95
ZAX60	755	574	67	50	55	38-φ27-φ15.5	24-φ15.5	90	76
ZAX70	806	593	73	60	60	25-φ17.5	24-φ17.5	76	94
EX100-1	1195	962	86	72	70	36-φ17	36-φ19	98	181
ZAX110	1092	860	86	68	70	30-φ20	36-φ18	88	158
ZAX120	1092	860	86	68	70	30-φ20	36-φ18	88	158
EX200-3	1312	1083.5	106	72	95	36-φ22	36-M20*1.5	92	232
ZAX210	1310	1080	106	72	95	36-φ21	36-M20*1.5	92	233
ZAX230	1420	1138	108	84	98	36-φ24	36-M24*2	83	329
ZAX330	1630	1297	120	95	110	36-φ29	36-M27*2	83	657
EX300-5	1630	1297	120	95	110	36-φ29	36-M27*2	83	657
R55-5	800	573	70	56	60	20-φ17.524	20-φ17.5	90	95
R80-7	900	665	85	70	70	30-φ17.5	30-φ17.5	85	131
R170-5	1202	947	83	75	70	36-φ22	36-M20	80	198
R200	1328	1083	111	80	94	28-φ22	36-M20	92	254
R300	1526	1235	122	87	110	35-φ26	40-M24	90	385
R450-7	1675	1346	132	108	120	46-φ25	44-M24	114	526
DH60	811	617	75	65	65	24-φ17.5	24-φ17.5	90	95
DH80-7	901	640	82	72	65	24-φ20	24-M18	82	138
DH220-5	1327	1084	112	90	95	36-φ21.5	36-M20*1.5	92	270

# BOOM / ARM / BUCKET CYLINDER

The large and medium arm cylinder is an actuator in the hydraulic system. Generally, it is composed of cylinder body, cylinder rod (piston rod) and seal. The cylinder body is divided into two parts by the piston, with one oil hole respectively. Since the compression ratio of the liquid is very small, when one oil hole is filled with oil, the piston will be pushed to make the other oil hole discharge oil, and the piston will drive the piston rod to extend (retract) movement.



Product Name	model	Part number	weight
bucket cylinder ass'y	EC240B	14563959	207KG
arm cylinder ass'y	EC250D, EC250E	14658078	380KG
bucket cylinder ass'y	EC250D	14594987	320KG
arm cylinder ass'y	EC210	14534532	276KG
bucket cylinder ass'y	EC210	14534533	160KG
boom cylinder ass'y	EC330C, EC360C	14549596	380KG
arm cylinder ass'y	EC330C, EC360	14549597/14640432	550KG
arm cylinder ass'y	R210LC-7; R210LC-7A;	31n6-50135	280KG
bucket cylinder ass'y	R210NLC-7; R220LC-7H	31n6-60110	220KG
arm cylinder ass'y	R210LC-7; R290LC-7;	31n6-66100	280KG
bucket cylinder ass'y	R210LC-7; R220LC-7H	31q6 60110	180KG
boom cylinder ass'y	R210LC-9;	31q6-50110	200KG
arm cylinder ass'y	EC360	14563816	395KG
arm cylinder ass'y	EC480D	14606236	650KG
bucket cylinder ass'y	EC480D	14570757	400KG
arm cylinder ass'y	ZX850-3	4638083	1300KG
bucket cylinder ass'y	ZX850-3	4638084	900KG
arm cylinder ass'y	ZX350LC-3	4628635	500KG
bucket cylinder ass'y	ZX350LC-3	4643260	266KG
arm cylinder ass'y	ZX270LC-3	4628630	330KG
bucket cylinder ass'y	ZX270LC-3	4628628	280KG
arm cylinder ass'y	ZX240LC-3	4618364	315KG
bucket cylinder ass'y	ZX240LC-3	4628634	280KG
boom cylinder ass'y	E330B E330C E330D	132-7895	300KG
arm cylinder ass'y	E330D	316-6243	380KG
bucket cylinder ass'y	E325B E330B E330C E325D	143-3198	230KG
arm cylinder ass'y	ZAXIS450-3	4637753	735KG
bucket cylinder ass'y	ZAXIS450-3	4637754	435KG
arm cylinder ass'y	ZX370F-3	4641550	395KG
boom cylinder ass'y	ZX650-3 ZX670-3	4653859	950KG

# FLOATING SEAL

The structure of the floating oil seal is generally composed of a pair of wear-resistant metal rings and a pair of rubber rings, which can prevent the external mud, sand and other pollutants from invading the equipment while preventing the leakage of lubricating oil.



number	Part number	Specifications	Applicable model
BLF100	205-30-00052	100*120*30	D20
BLF110	130-27-00020	110*132*31	D50.D40.EC290
BLF115	150-27-00015	115*137*31	D60.EX400
BLF130	170-27-00010	130*151*32	D31.D85.D85A-18
BLF148	175-27-00121	148*170*32	PC20/30-6.PC/35R-8.PC40-6/7
BLF160	80-27-00021	160*180*32	PC40-8/9.PC55.EX45.PC200-1/2
BLF154	5K1078	154*168*26	SK30.EX30.YC35.
BLF182	5M1176	182*210*38	EX60-1/2.EX75.D60P
BLF205	GZ5820	205*227*32	PC60-7E.PC78UU.PC75-8
BLF209	HIT4110368	209*234*42	HD180.UH04-5
BLF220	HIT4110369	220*246*36	EX100/120-2/3/5.ZAX120
BLF223	9W6686	223*251*44	EX100/120-1
BLF225	130-27000010	225*253*38	PC120-5 D50P
BLF235	A2350000	235*265*42	ZAX200/210/230
BLF239	141-27-00010	239*268*42	EX200-2/3/5.EX220-2/3
BLF250	HIT4514259	250*277*44	EX200/220-1.SH100/120A3.PC120-6E/PC128UU
BLF260	14X-27-00100	260*288*40	SK200-8.SK250/260-8
BLF260A/B	209*234*22	100*120*30	PC100/120-3 HD450-5
BLF265	5M1177	265*292*38	E311/312.R200/220.HD800-7.HD900/1250
BLF300	150-27-00025	298*328*42	PC200-3/5.E200B/320L/B/C.HD700.SK200-3/5
BLF318	5M7294	318*346*38	VOLVO210.E325.SH300A3
BLF340	170-27-00020	340-368*40	PC200-6E.DHG220-5.PC220-6/7.PC300-5/6
BLF366	4D4510/4D4521	366*394*38	EX400/450.E330B/C.SK300.SH300
BLF381	287-33-00010	381*405*40	PC400-3/5/6.ZX450.R300

# CLUTCH DISC

The clutch is composed of friction plate, spring plate, pressure plate and power output shaft. It is located between the engine and the gearbox. It is used to transmit the torque stored on the engine flywheel to the gearbox to ensure that the vehicle can transmit appropriate driving force and torque to the driving wheels under different driving conditions. It belongs to the category of power assembly.

Engine	Part number	weight	Package size
PC200-5 PC200-6	20Y-01-11112	6.2 KG	37*37*7
PC200-7 PC200-8	22U-01-21310	6.2 KG	37*37*7
PC300-7 PC360-7 PC350-7 PC400-7	207-01-71310	15.1 KG	50*49*7
PC300-6 PC350-6 PC360-6 D65-12 D85-E	14X-12-11102	14.3 KG	50*49*7
PC300-6 PC400-8/KMD020NX	207-01-61311	15 KG	50*49*7
D61/KMD022NX	134-12-61131	10.3 KG	40*40*7
D31/KMD023NX D37	113-12-42201	4.9 KG	37*37*7
D41A-6 D41E-6	124-12-51141	9.1 KG	40*40*7
D12C D12D D13F D13H EC360 EC380 EC460 EC480	VOE14528378	8.4 KG	39*39*7
C13 E345D E349D	310-9497	20 KG	41*41*10



# COUPLING

Connecting rubber: it is composed of spline shaft sleeve, aluminum block and rubber block. During installation, first install the aluminum body and the elastomer on the flywheel disk of the internal combustion engine, and then insert the spline shaft sleeve locked on the oil pump. The coupling adjusts and compensates the manufacturing error and installation deviation of the product through the clearance between the spline shaft sleeve and the elastomer, and connects the hydraulic pump.





Our manufacture produces in accordance with the original standards, using production equipment imported from South Korea, Japan and other countries and helps many foreign companies to procure excavator parts in China professionally. Thus, we are strict with the quality of products. We stick to our principle of providing high-quality products and good services to customers. We attach great importance to the material and manufacturing technique of products to ensure the interests of our customers!



### **Strong part number database**

If you can provide the right model and part number, we can supply the right product.



### **Professional and experienced**

salesperson. Our founder has been in this field for more than 12 years, with rich experiences.



### **Good management system**

No matter how big or small order, as long as customers place the order, we will provide our best service.



### **Reliable quality**

Most products have at least 6 months warranty. During the warranty period, repairing parts will be offered at free price.



### **Quality Assurance**

Quality assurance, 100% testing before delivery to ensure that each product is correct and usable.



# EXHIBITION

Customer photo



We regularly participate in exhibitions and communicate with customers from different countries. Many buyers from different countries have placed orders with us. The products mainly rely on quality and price to win customers' favor. They are sold all over the world under their own brand "belparts", which is highly praised by foreign customers.

